

LOC/DME I-GLD	APP CRS	Rwy Idg	5499
108.9	305°	TDZE	3654
Chan 26		Apt Elev	3657

ILS or LOC RWY 30

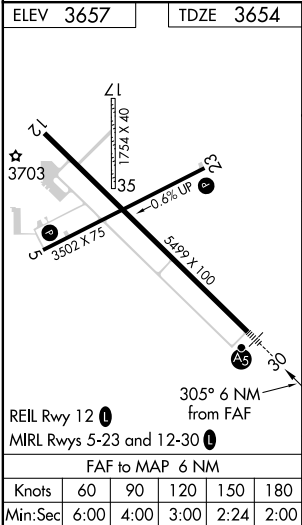
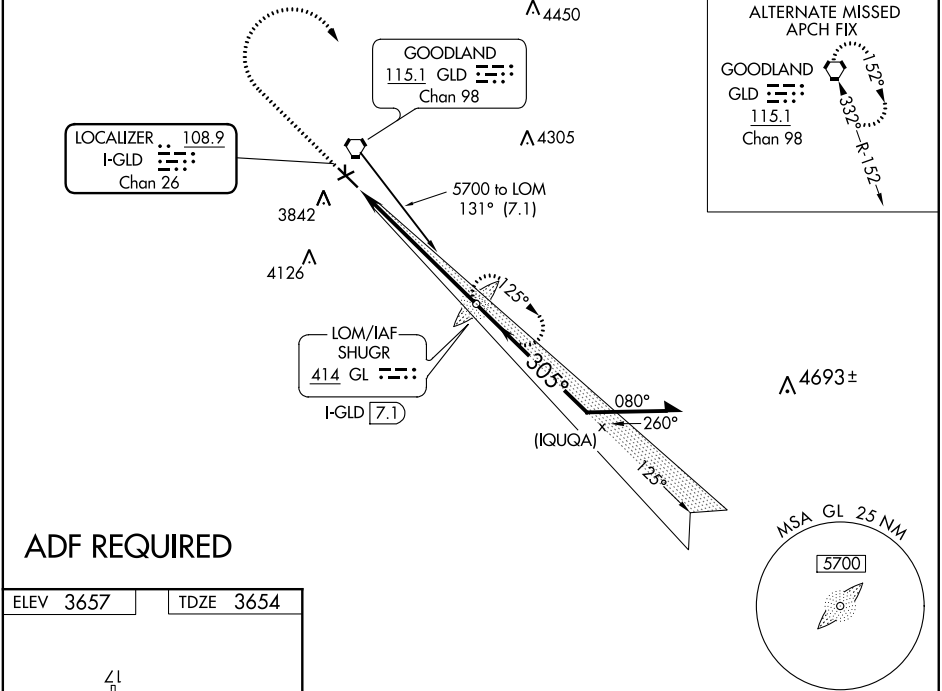
RENNER FIELD/GOODLAND MUNI (GLD)

**⚠** Circling NA south of runways 5 and 30. ADF required. VDP NA with Burlington, CO altimeter setting. When local altimeter setting not received, use Burlington, CO altimeter setting and increase all DA 144 feet and all MDA 160 feet. Increase S-ILS 30 all Cats visibility to ½ mile, S-LOC 30 Cat C/D visibility to 1 ½ mile, Circling Cat C visibility to 1 ¾ mile, and Cat D to 2 ¼ mile. Circling NA to Rwys 17 and 35. Circling Rwy 5, 23 NA at night.

MALSR

MISSED APPROACH: Climb to 4500 then climbing right turn to 5700 direct SHUGR LOM/I-GLD 7.1 DME and hold.

ASOS 121.025	DENVER CENTER 132.7 226.675	UNICOM 122.8 (CTAF)
-----------------	--------------------------------	------------------------



 *LOC only	 *I-GLD 2.3		GL SHUGR LOM I-GLD 7.1				Remain within 10 NM	
	 1.2 NM	 4.8 NM		125°	305°	5700	5700	GS 3.00° TCH 55
CATEGORY	A	B	C	D				
S-ILS-30	3854-½ 200 (200-½)							
S-LOC-30	4100-½ 446 (500-½)	4100-7/8 446 (500-7/8)						
CIRCLING	4100-1 443 (500-1)	4120-1 463 (500-1)	4120-1½ 463 (500-1½)	4240-2 583 (600-2)				

NC-2, 03 DEC 2020 to 31 DEC 2020

NC-2, 03 DEC 2020 to 31 DEC 2020