




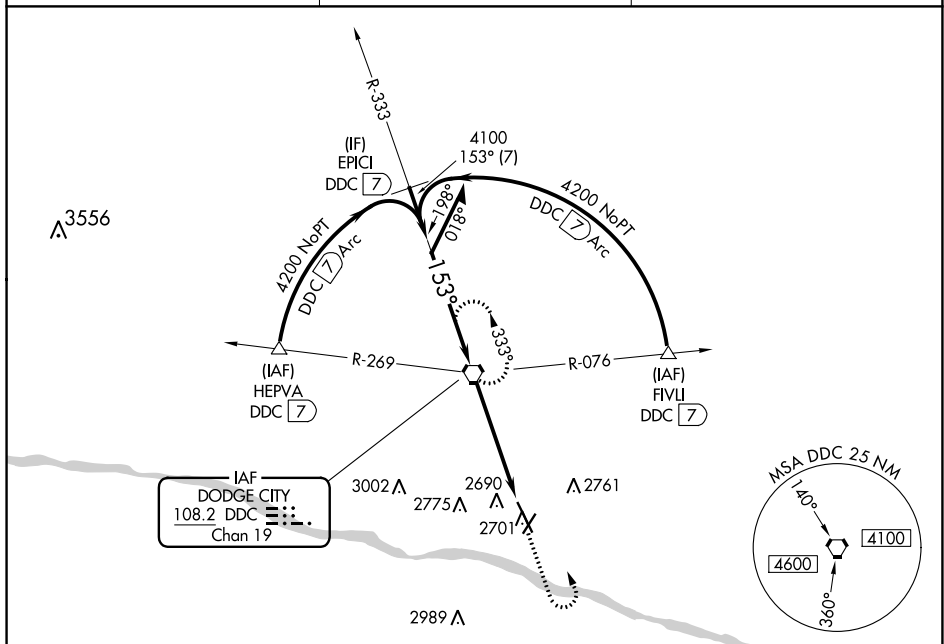


|  |                        |                             |   |
|--|------------------------|-----------------------------|---|
| VORTAC DDC<br><b>108.2</b><br>Chan <b>19</b> | APP CRS<br><b>153°</b> | Rwy Idg<br>TDZE<br>Apt Elev | <b>6329</b><br><b>2586</b><br><b>2596</b> |
|--|------------------------|-----------------------------|---|

VOR RWY 14  
DODGE CITY RGNL (DDC)

|   |  |  |  |   |  |
|---|--|--|--|---|--|
|   -20°C |  | MALSR<br>  |  | MISSED APPROACH: Climb to 4200 then left turn direct DDC VORTAC and hold.                                     |  |
| ASOS<br><b>118.525</b>  |  | KANSAS CITY CENTER<br><b>125.2 269.4</b>   |  | UNICOM<br><b>122.7 (CTAF)</b>  |  |



| FAF to MAP 4.9 NM |      |      |      |      |      |
|-------------------|------|------|------|------|------|
| Knots             | 60   | 90   | 120  | 150  | 180  |
| Min:Sec           | 4:54 | 3:16 | 2:27 | 1:58 | 1:38 |

Diagram illustrating a DDC VORTAC approach with a circling maneuver. The diagram shows a 4200 ft altitude at the start, a 33° climb, a 153° turn, and a 37° descent to 4100 ft. A 2.84 NM segment follows at 37° descent, then a 1.2 NM segment to the runway. A circling maneuver is shown with a 4200 ft altitude and a 37° descent. The diagram also includes a table of approach parameters for categories S-14, C, and D.

| CATEGORY   | A                      | B                  | C                      | D                          |
|------------|------------------------|--------------------|------------------------|----------------------------|
| S-14       | 3000-1/2 414 (500-1/2) |                    | 3000-3/4 414 (500-3/4) | 3000-1 414 (500-1)         |
| C CIRCLING | 3040-1 444 (500-1)     | 3080-1 484 (500-1) | 3320-2 724 (800-2)     | 3320-2 1/4 724 (800-2 1/4) |

NC-2, 03 DEC 2020 to 31 DEC 2020