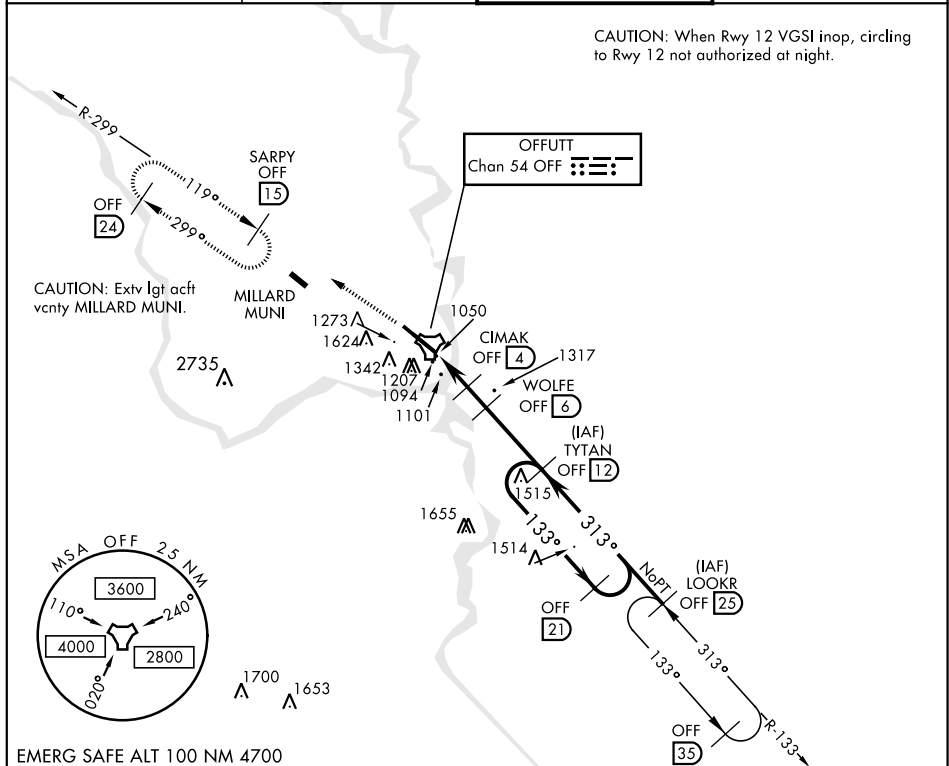


TACAN Y RWY 30

TACAN OFF Chan 54	APCH CRS 313°	Rwy ldg 10,612 TDZE 985 Arpt Elev 1049	AL-544 [USAF]	OFFUTT AFB (KOFF)
-----------------------------	-------------------------	---	---------------	-------------------

<p>T * When ALS inop, increase CAT ABCDE RVR to 55 and vis to 1 mile. ** Circling not authorized N of Rwy 12-30.</p>	<p>ALS F-1 (A1)</p>	<p>MISSED APPROACH: Climb to 3000 via OFF TACAN R-299 to SARPY and hold.</p>
---	-------------------------	--

<p>ATIS 126.025 273.5</p>	<p>OMAHA APP CON E 124.5 263.0 W 120.1 354.05</p>	<p>OFFUTT TOWER 123.7 279.625</p>	<p>GND CON 121.7 289.4</p>
--------------------------------------	---	--	---------------------------------------



EMERG SAFE ALT 100 NM 4700

<p>3000 OFF R-299</p> <p>SARPY OFF (15)</p> <p>↑ WOLFE to COLIB</p> <p>LOOKR (25)</p> <p>TACAN</p> <p>COLIB (1)</p> <p>CIMAK (4)</p> <p>WOLFE (6)</p> <p>TYTAN (12)</p> <p>2700</p> <p>3000</p> <p>2.82°†</p> <p>TCH 56</p> <p>1100 A</p> <p>1134 A</p> <p>1157 TWR</p> <p>1255</p> <p>313° to TACAN</p> <p>0.2° UP</p> <p>11,700 x 150</p> <p>Rwy 12 ldg 10,696'</p> <p>Rwy 30 ldg 10,612'</p> <p>Rwy 12-30 ALS nstd</p>	<p>ELEV 1049</p> <p>TDZE 985</p> <p>HIRL Rwy 12-30</p>
<p>CATEGORY</p> <p>A</p> <p>B</p> <p>C</p> <p>D</p> <p>E</p>	<p>3000</p> <p>2100</p> <p>2700</p> <p>3000</p> <p>9500</p>
<p>S-30 *</p>	<p>1360/40</p> <p>375</p> <p>(400-¾)</p>
<p>CIRCLING **</p>	<p>1500-1</p> <p>1600-1</p> <p>1680-1¾</p> <p>1940-3</p> <p>891</p> <p>(900-3)</p>
<p>451 (500-1)</p> <p>551 (600-1)</p> <p>631 (700-1¾)</p>	

TACAN Y RWY 30