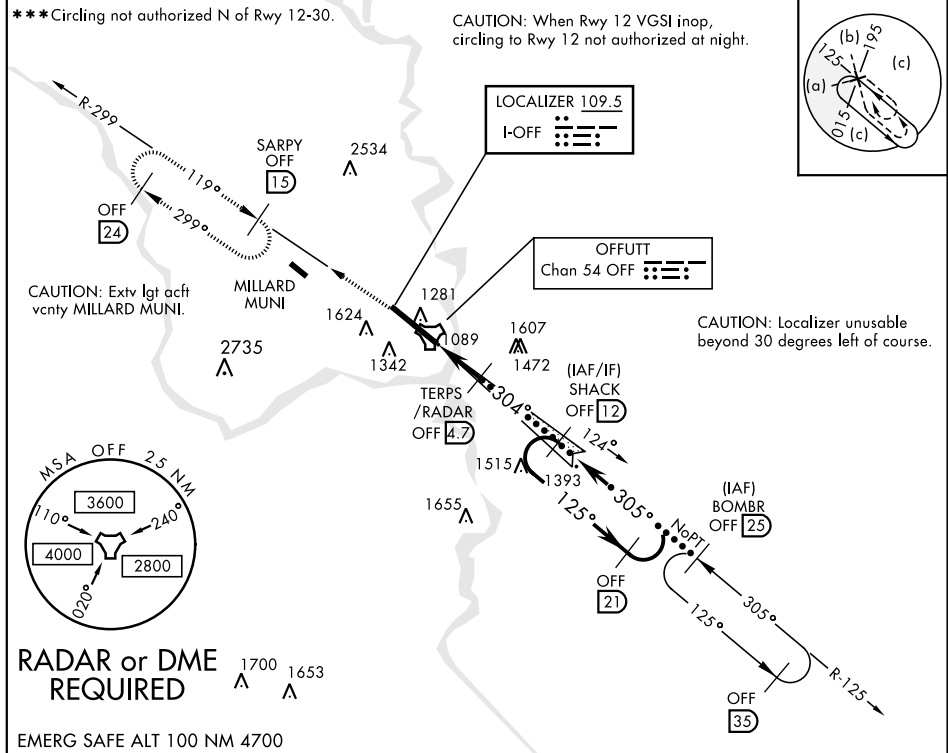


HI-ILS or LOC Z RWY 30

LOC I- OFF 109.5	APCH CRS 304°	Rwy ldg 10,612 TDZE 985 Arpt Elev 1049	JAL-544 [USAF]	OFFUTT AFB (KOFF)
▼ * When ALS inop, increase CAT CDE RVR to 40 and vis to ¾ mile. ** When ALS inop, increase CAT CDE RVR to 55 and vis to 1 mile.			ALSF-1 	MISSED APPROACH: Climb to 3000 via OFF TACAN R-299 to SARPY and hold.

ATIS 126.025 273.5	OMAHA APP CON E 124.5 263.0 W 120.1 354.05	OFFUTT TOWER 123.7 279.625	GND CON 121.7 289.4
------------------------------	--	--------------------------------------	-------------------------------



3000 OFF R-299 SARPY OFF 15	† LOC Only	ELEV 1049 TDZE 985
TACAN CULUX 9 TERPS/RADAR 4.7 SHACK 12 BOMBR 25	3000 GS 2.80° TCH 58	HIRL Rwy 12-30 TWR 1157 11700 x 150 0.7% UP 304° 4.3 NM from FAF 972'
CATEGORY S-ILS 30 * S-LOC 30 ** *** CIRCULING	C 1185/24 1360/35 1680-1¾ 631 (700-1¾)	D 200 (200-½) 375 (400-%) 1940-3 891 (900-3)
FAF to MAP 3.8 NM		Rwy 12 ldg 10,696' Rwy 30 ldg 10,612' Rwy 12-30 ALS nstd
Knots Min:Sec 1:54 1:38 1:26 1:16 1:08		120 140 160 180 200

HI-ILS or LOC Z RWY 30