

WAAS CH 69523 W30A	APP CRS 298°	Rwy Idg 4400 TDZE 3290 Apt Elev 3298
--	------------------------	--

RNAV (GPS) RWY 30

CHADRON MUNI (CDR)

▼

▲

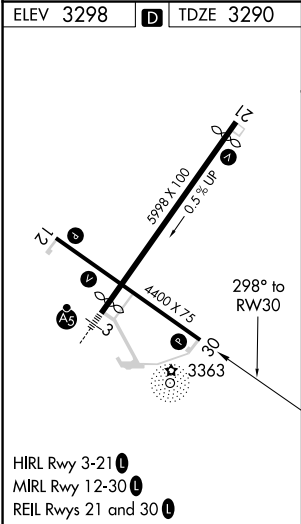
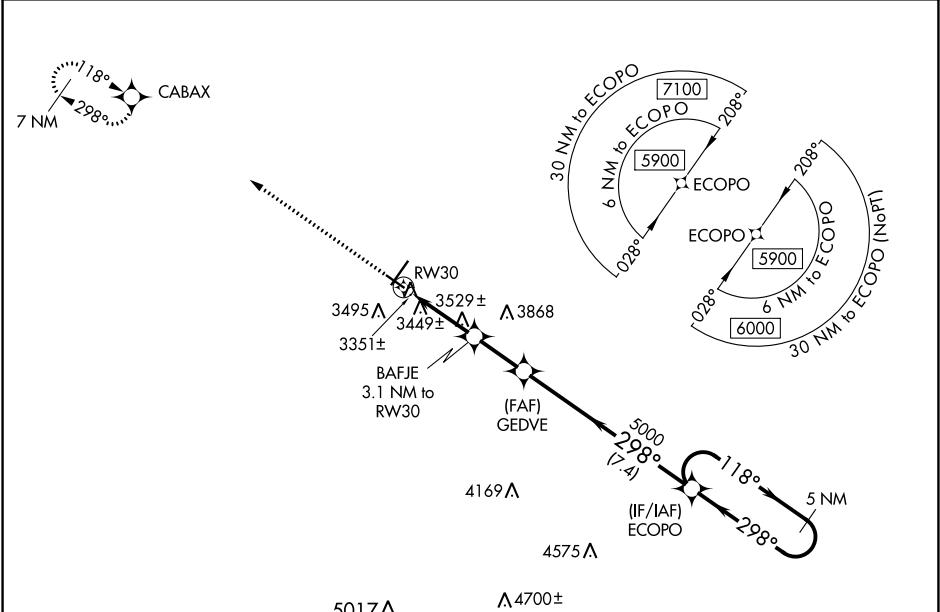
33

-32°C

For uncompensated Baro-VNAV systems, LNAV/VNAV NA below -21°C (-5°F) or above 54°C (130°F). DME/DME RNP-0.3 NA. When local altimeter setting not received, use Pine Ridge altimeter setting and increase all DA 70 feet and all MDA 80 feet; increase LPV all Cats visibility 1⁄8 mile, LNAV/VNAV all Cats visibility 1⁄4 mile, and LNAV and Circling Cat C visibility 1⁄4 mile. Baro-VNAV and VDP NA with Pine Ridge altimeter setting.

MISSED APPROACH:
Climb to 6300 direct CABAX and hold.

ASOS 118.05	DENVER CENTER 127.95 338.2	UNICOM 122.8 (CTAF) 0
-----------------------	--------------------------------------	--



6300 CABAX				
* LNAV only				
BAFJE 3.1 NM to RW30 GEDVE 5000 ECOPO 5 NM Holding Pattern				
* 1.4 NM to RW30				
RW30 4300* 5000 298° 118° 298° 5900				
GP 3.00° TCH 40				
CATEGORY	A	B	C	D
LPV DA	3540-1	250 (300-1)		NA
LNAV/VNAV DA	3767-1½	477 (500-1½)		NA
LNAV MDA	3780-1	490 (500-1)	3780-1¾ 490 (500-1¾)	NA
CIRCLING	3820-1	522 (600-1)	3920-1¾ 622 (700-1¾)	NA