

WAAS CH <b>65615</b> <b>W03A</b>	APP CRS <b>028°</b>	Rwy Idg <b>5211</b> TDZE <b>3294</b> Apt Elev <b>3298</b>
--	------------------------	---

RNAV (GPS) RWY 3

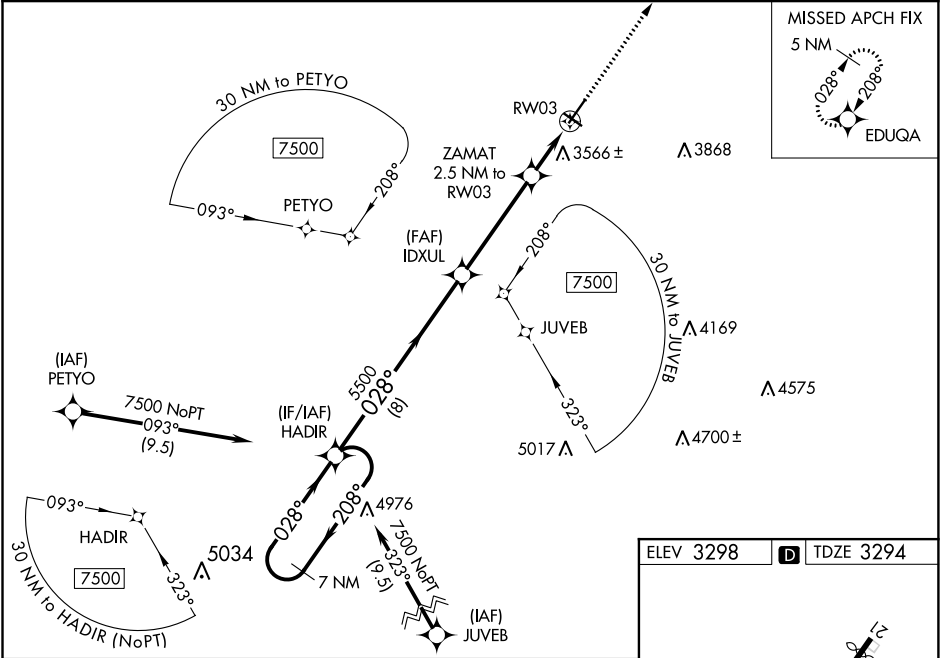
CHADRON MUNI (CDR)

Baro-VNAV NA when using Pine Ridge altimeter setting. For uncompensated Baro-VNAV systems, LNAV/VNAV NA below -21°C (-5°F) or above 23°C (73°F). For inop MALSR, when using Pine Ridge altimeter setting, increase LPV all Cats visibility to ¾. DME/DME RNP -0.3 NA. VDP NA with Pine Ridge altimeter setting. When local altimeter setting not received, use Pine Ridge altimeter setting and increase all DA 70 feet and all MDA 80 feet; increase LNAV/VNAV all Cats visibility ¼ mile, increase LNAV Cats C and D visibility ⅓ mile, and increase Circling Cats C and D visibility ¼ mile.

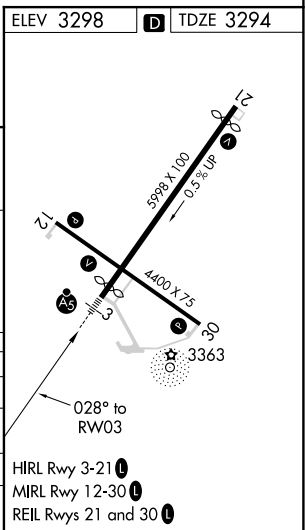
MALSR

MISSED APPROACH:  
Climb to 5100 direct  
EDUQA and hold.

ASOS <b>118.05</b>	DENVER CENTER <b>127.95 338.2</b>	UNICOM <b>122.8 (CTAF) 0</b>
-----------------------	--------------------------------------	---------------------------------



7 NM Holding Pattern HADIR		VGSI and RNAV glidepath not coincident (VGSI Angle 3.00/TCH 61).		5100 EDUQA
7500 ← 208°		→ 028°		*LNAV only
GP 3.00° TCH 60		5500		
		*4140		
		RW03		
		1.5 NM to RW03		
		2.5 NM to RW03		
		5500		
		IDJUL		
		8 NM		
		4.2 NM		
		1 NM		
		1.5 NM		
CATEGORY	A	B	C	D
LPV DA	3494-½		200 (200-½)	
LNAV/VNAV DA	3902-1½		608 (700-1½)	
LNAV MDA	3820-½	526 (600-½)	3820-1	526 (600-1)
CIRCLING	3820-1	3880-1	3920-1¾	3920-2
	522 (600-1)	582 (600-1)	622 (700-1¾)	622 (700-2)



NC-2, 03 DEC 2020 to 31 DEC 2020

NC-2, 03 DEC 2020 to 31 DEC 2020