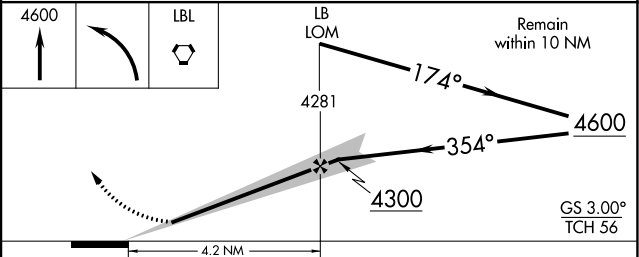
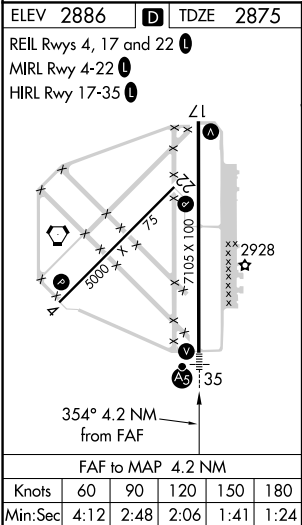
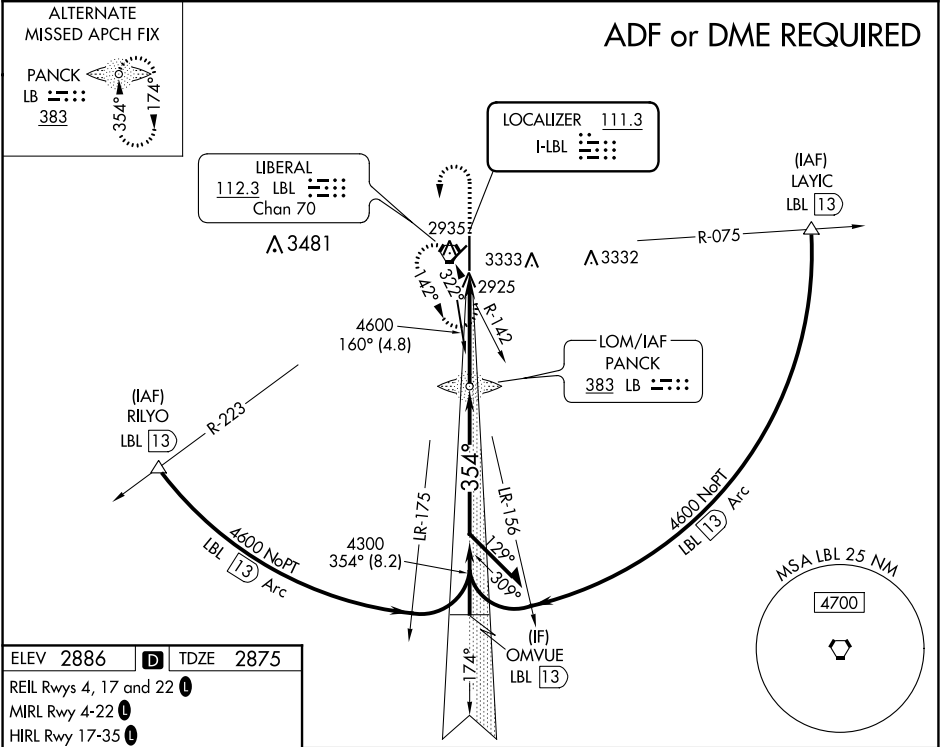


LOC I-LBL <b>111.3</b>	APP CRS <b>354°</b>	Rwy Idg TDZE Apt Elev
		<b>7101</b> <b>2875</b> <b>2886</b>

ILS or LOC RWY 35  
LIBERAL MID-AMERICA RGNL (L.B.L.)

<p><b>⚠</b> Circling NA east of Rwy 17-35. When local altimeter setting not received, use Guymon Muni altimeter setting: Increase all DA 112 feet and all MDA 120 feet. Increase S-LOC Cats C and D visibility 3/4 mile; Circling Cat D visibility 1/4 mile.</p>	<p><b>MALSR</b> </p>	<p><b>MISSED APPROACH:</b> Climb to 4600 then left turn direct LBL VORTAC and hold.</p>
--	--------------------------	---

AWOS-3PT <b>118.375</b>	KANSAS CITY CENTER <b>134.0 257.865</b>	UNICOM <b>122.8 (CTAF)</b>
----------------------------	--	-------------------------------



CATEGORY	A	B	C	D
S-ILS 35	3075-1/2 200 (200-1/2)			
S-LOC 35	3260-1/2 385 (400-1/2)		3260-5/8 385 (400-5/8)	
CIRCLING	3260-1 374 (400-1)	3340-1 454 (500-1)	3340-1 1/2 454 (500-1 1/2)	3440-2 554 (600-2)