

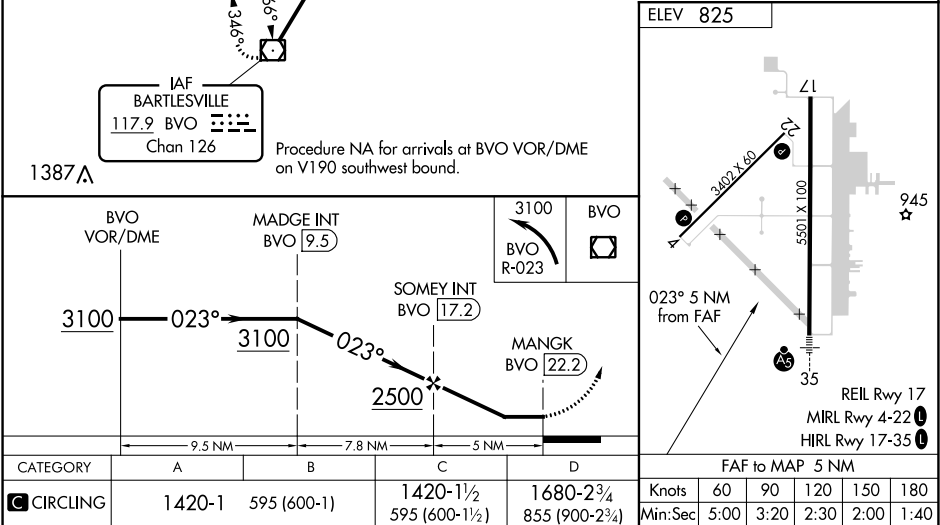
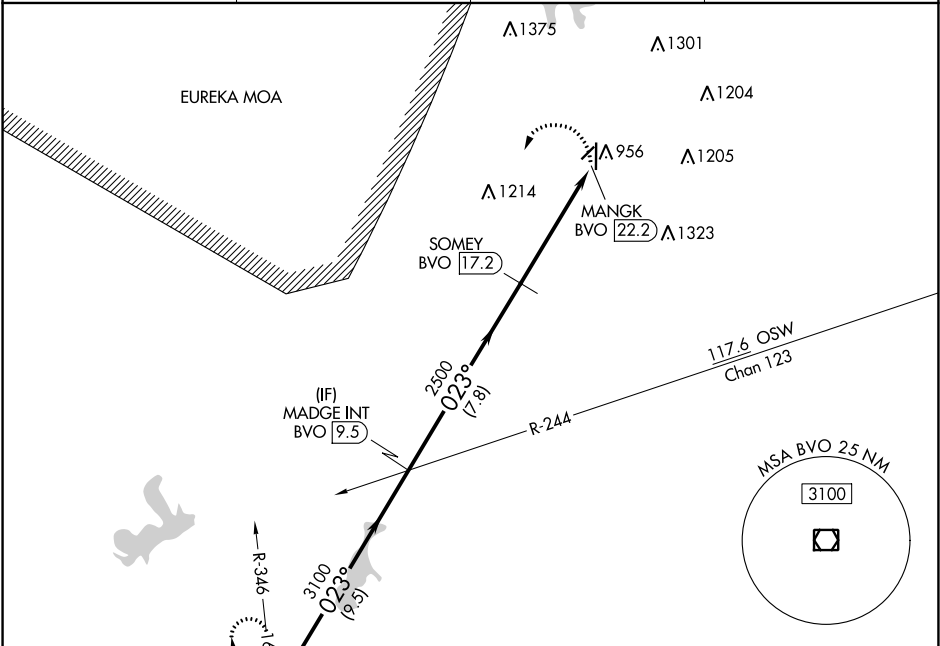
VOR/DME BVO
117.9
Chan **126**

APP CRS
023°

Rwy Idg
TDZE
Apt Elev
N/A
N/A
825

VOR-A
INDEPENDENCE MUNI (IDP)

DME required.		MISSED APPROACH: Climbing left turn to 3100 on BVO VOR/DME R-023 to BVO VOR/DME and hold.	
Circling Rwy 4, 22 NA at night.			
AWOS-3 118.525	KANSAS CITY CENTER 132.9 279.5	CLNC DEL 121.65	UNICOM 123.05 (CTAF) 0



NC-2, 03 DEC 2020 to 31 DEC 2020

NC-2, 03 DEC 2020 to 31 DEC 2020