

VORTAC GCK 113.3 Chan 80	APP CRS 344°	Rwy Idg 7299 TDZE 2885 Apt Elev 2891
---------------------------------------	------------------------	---

VOR RWY 35
GARDEN CITY RGNL (GCK)

DME required.

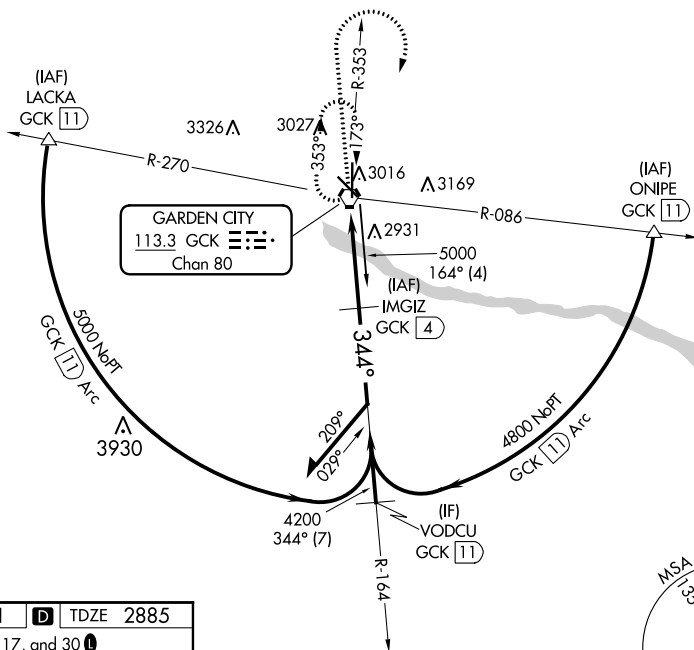
T For inop ALS, increase S-35 Cat C visibility to $\frac{7}{8}$ SM.
A Inop table does not apply to S-35 Cat D.

MALSR



MISSED APPROACH: Climb to 4000 then climbing right turn to 4800 direct GCK VORTAC and hold.

ASOS 121.325	KANSAS CITY CENTER 125.2 269.4	GARDEN CITY TOWER* 118.15 (CTAF) 0 254.4	GND CON 119.0 254.4	UNICOM 122.95
------------------------	--	--	-------------------------------	-------------------------



ELEV 2891

D

TDZE 2885

REIL Rwy 12, 17, and 30

MIRL Rwy 12-30

HIRL Rwy 17-35

7299 X 100

5700 X 100

TWR 2944

2941

2926±

344° to VORTAC

