

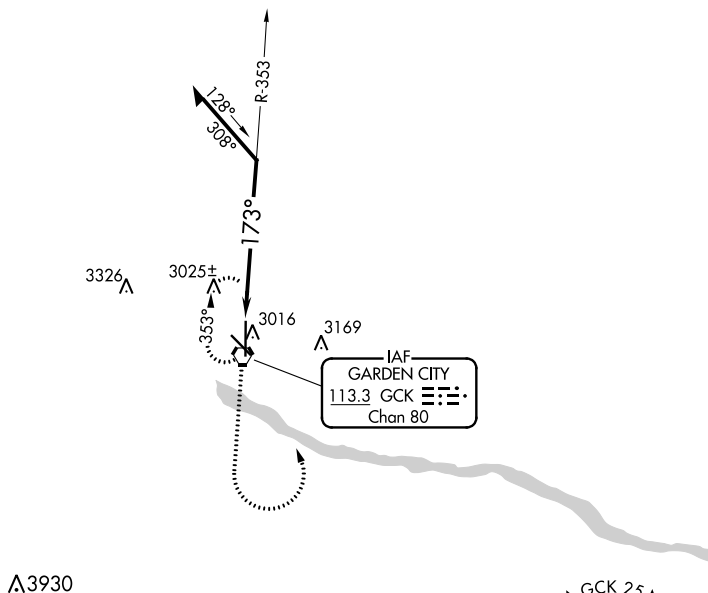
VORTAC GCK 113.3 Chan 80	APP CRS 173°	Rwy Idg 7299 TDZE 2889 Apt Elev 2891
--	------------------------	---

VOR RWY 17
GARDEN CITY RGNL (GCK)

T When local altimeter setting not received, use Dodge City Rgnl altimeter setting and increase all MDA 140 feet and Circling Cat C visibility $\frac{1}{2}$ SM and Circling Cat D visibility $\frac{1}{4}$ SM. VDP NA when using Dodge City Rgnl altimeter setting.

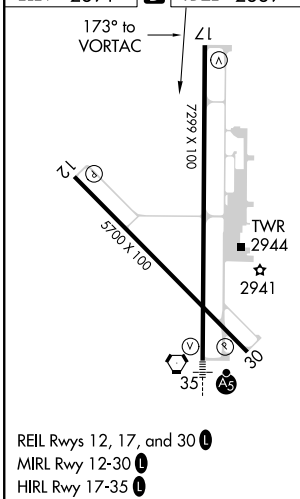
MISSED APPROACH:
Climb to 4000, then climbing left turn
to 4500 direct GCK VORTAC and hold.


ASOS 121.325	KANSAS CITY CENTER 125.2 269.4	GARDEN CITY TOWER* 118.15 (CTAF) 0 254.4	GND CON 119.0 254.4	UNICOM 122.95
-----------------	-----------------------------------	---	------------------------	------------------



NC-2, 03 DEC 2020 to 31 DEC 2020

ELEV 2891	D	TDZE 2889
-----------	----------	-----------



CATEGORY	A	B	C	D
S-17	3340-1	451 (500-1)	3340-1½ 451 (500-1½)	3340-1½ 451 (500-1½)
 CIRCLING	3340-1 449 (500-1)	3360-1 469 (500-1)	3480-1½ 589 (600-1½)	3480-2 589 (600-2)