

TACAN RWY 19L

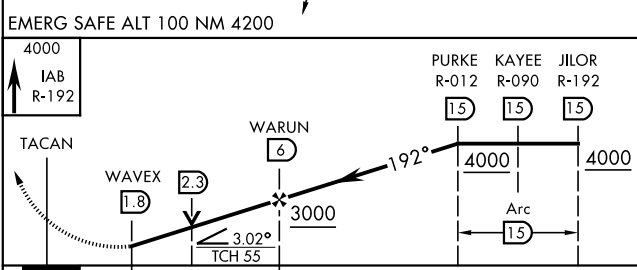
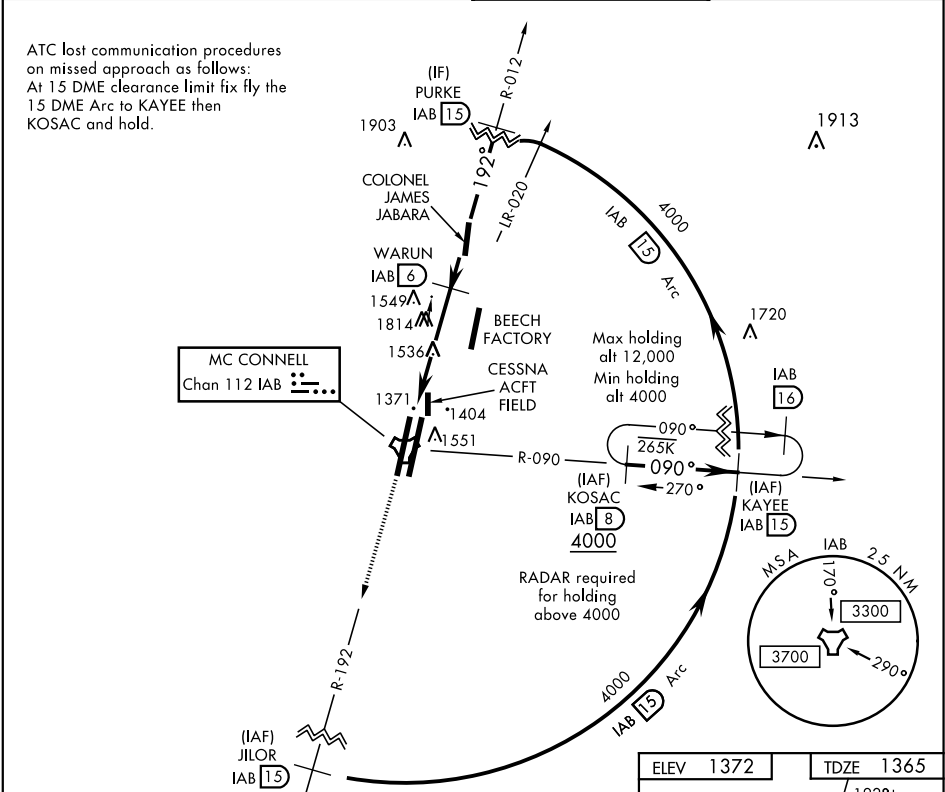
TACAN IAB Chan <b>112</b>	APCH CRS <b>192°</b>	Rwy ldg <b>12,007</b> TDZE <b>1365</b> Arprt Elev <b>1372</b>	AL-453 [USAF]	MC CONNELL AFB (KIAB)
------------------------------	-------------------------	---	---------------	-----------------------

▼ \* When ALS inop, increase CAT AB RVR to 55 and vis to 1 mile, CAT CDE vis to 1 3/8 miles.  
\*\* Circling not authorized W of Rwy 1L-19R.

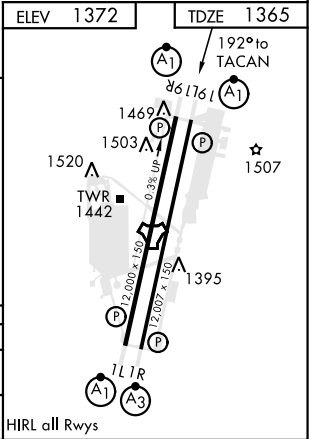
ALSF-1  
A1

MISSED APPROACH: Climb to 4000 via IAB  
TACAN R-192 to JILOR. Expect further  
clearance from ATC.

D-ATIS <b>124.65 269.9</b>	WICHITA APP CON <b>134.8 269.1</b>	MC CONNELL TOWER <b>127.25 291.775</b>	GND CON <b>118.0 275.8</b>
-------------------------------	---------------------------------------	---	-------------------------------



CATEGORY	A	B	C	D	E
S-19L *	1820/40 455 (500-3/4)		1820/45 455 (500-7/8)		
CIRCLING **	1900-1 528 (600-1)		1900-1 1/2 528 (600-1 1/2)	2400-3 1028 (1100-3)	



TACAN RWY 19L

NC-2, 03 DEC 2020 to 31 DEC 2020

NC-2, 03 DEC 2020 to 31 DEC 2020