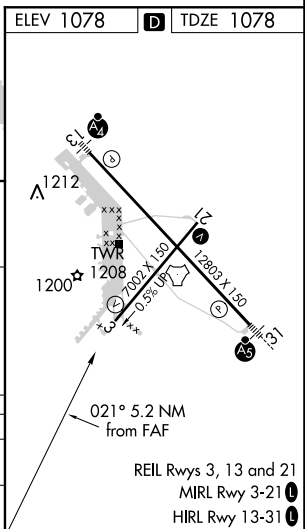
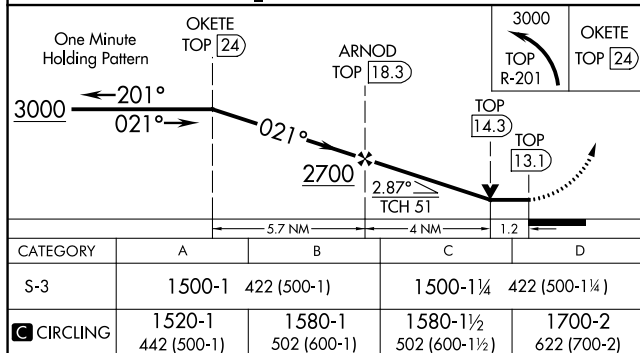
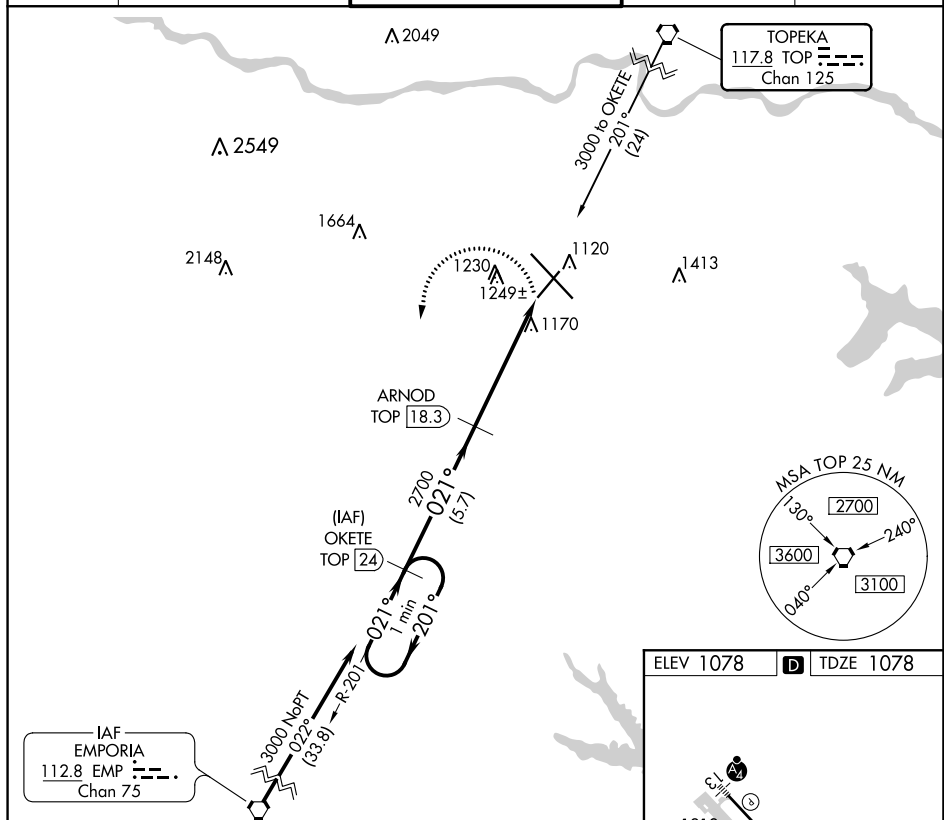


VOR/DME or TACAN RWY 3
TOPEKA RGNL (FOE)

MISSED APPROACH: Climbing left turn to 3000 via TOP R-201 to OKETE/24 DME and hold.

UNICOM
122.95

TOPEKA RGNL (FOE)

VOR/DME or TACAN RWY 3

NC-2, 03 DEC 2020 to 31 DEC 2020