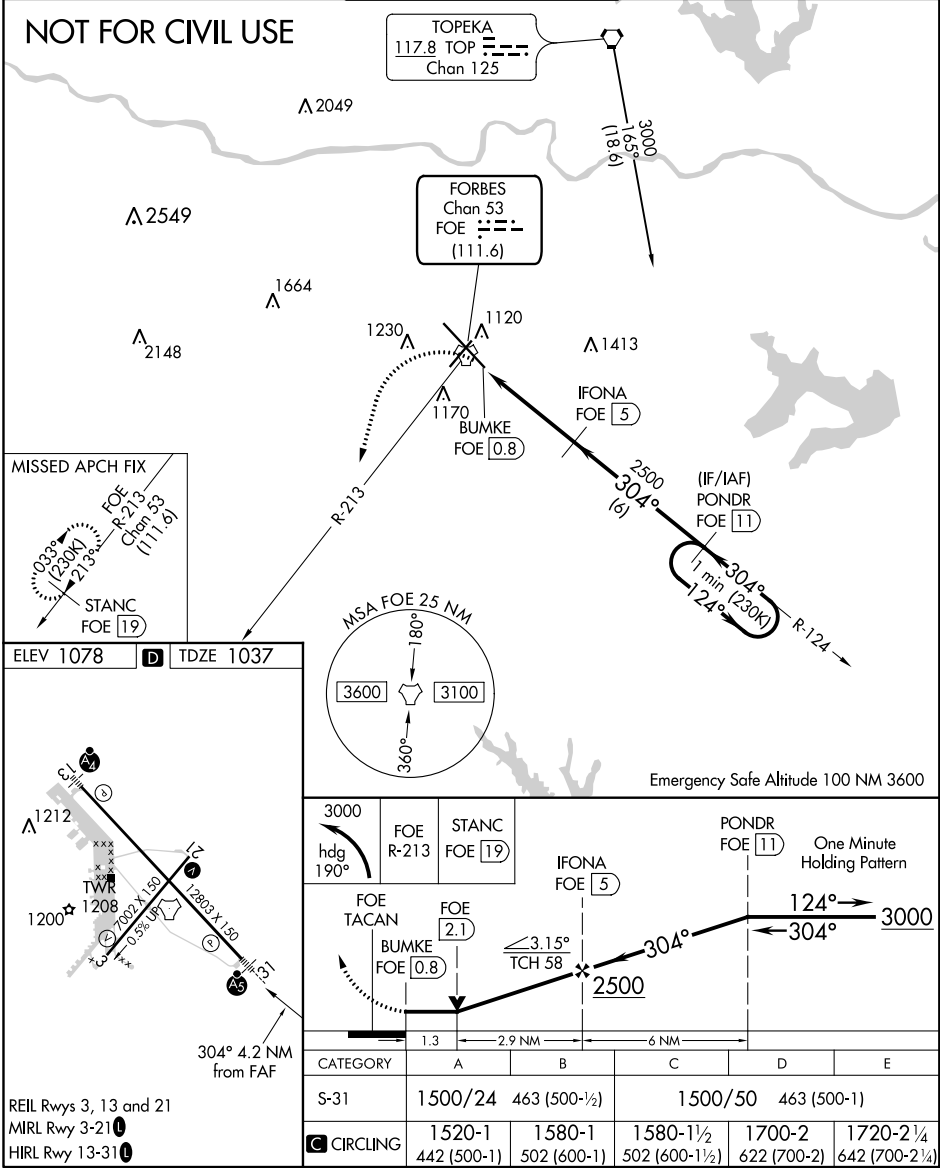


TACAN FOF Chan 53 (111.6)	APP CRS 304°	Rwy Idg 12803 TDZE 1037 Apt Elev 1078
---	---------------------	--

TACAN RWY 31
TOPEKA RGNL (FOE)

NA For inoperative ALS, increase S-31 Cats C/D/E visibility to 1 3/8 SM.	MALSR 	MISSED APPROACH: Climbing left turn to 3000 heading 190° and on FOE TACAN R-213 to STANC/19 DME and hold.
---	------------------	--

ATIS 128.25	KANSAS CITY CENTER 123.8 343.7	FORBES TOWER* 120.8 (CTAF) 340.2	GND CON 118.425 275.8	UNICOM 122.95
------------------------------	---	---	--	--------------------------------



NC-2, 03 DEC 2020 to 31 DEC 2020

NC-2, 03 DEC 2020 to 31 DEC 2020