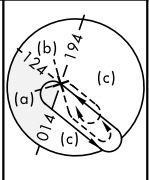
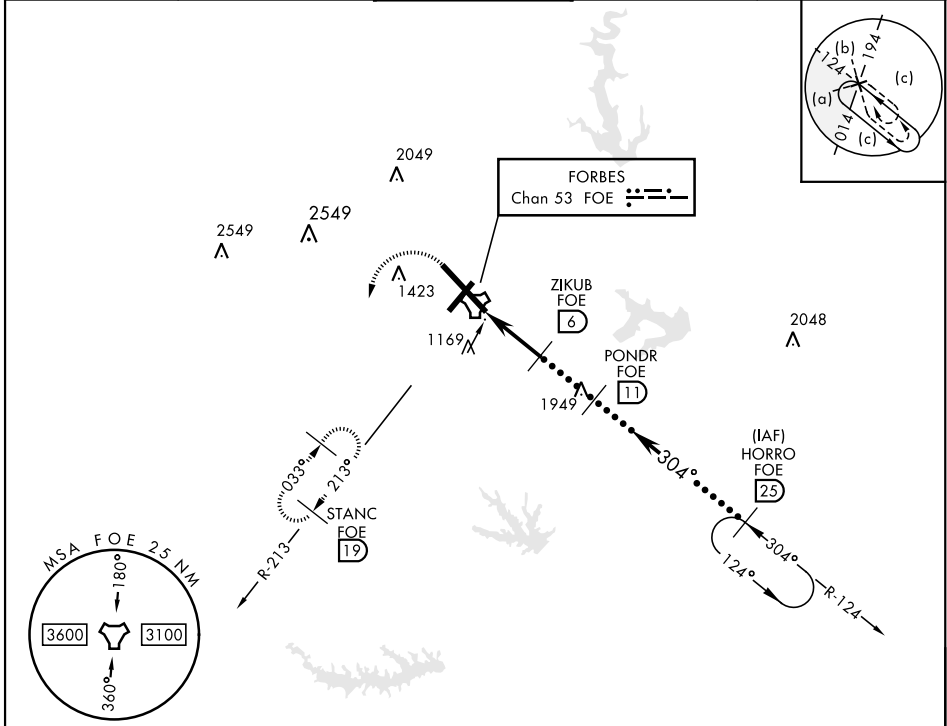


HI-TACAN RWY 31

TACAN Chan 53	APCH CRS 304°	Rwy Idg 12,803 TDZE 1037 Arprt Elev 1078	JAL-424 [USAF]	TOPEKA RGNL (KFOE)
* For ALS inop, increase CAT CDE vis to 1 3/8.			MALSRL A5	MISSED APPROACH: Climbing left turn to 3000 via heading 190° and FOE TACAN R-213 to STANC/19 DME and hold.
ATIS 128.25	KANSAS CITY CENTER 123.8 343.7	FORBES TOWER ★ 120.8 (CTAF) 340.2	GND CON 118.425 275.8	UNICOM 122.95



EMERG SAFE ALT 100 NM 3600				ELEV 1078	TDZE 1037
3000 FOE R-213	STANC FOE 19	HORRO R-124 25			
TACAN BUMKE 8		ZIKUB 6	PONDNR 11	FL 250 10,000	
2.1 2700		304°		3000	
5.2 NM		2.90° TCH 58			
CATEGORY	C	D	E		
S-31 *	1520/50 483 (500-1)				
CIRCLING	1580-1½ 502 (600-1½)	1700-2 622 (700-2)	1720-2¼ 642 (700-2¼)		

HI-TACAN RWY 31