

WAAS
CH **45606**
W23A

APP CRS
238°

Rwy Idg
TDZE **3967**
Apt Elev **3967**

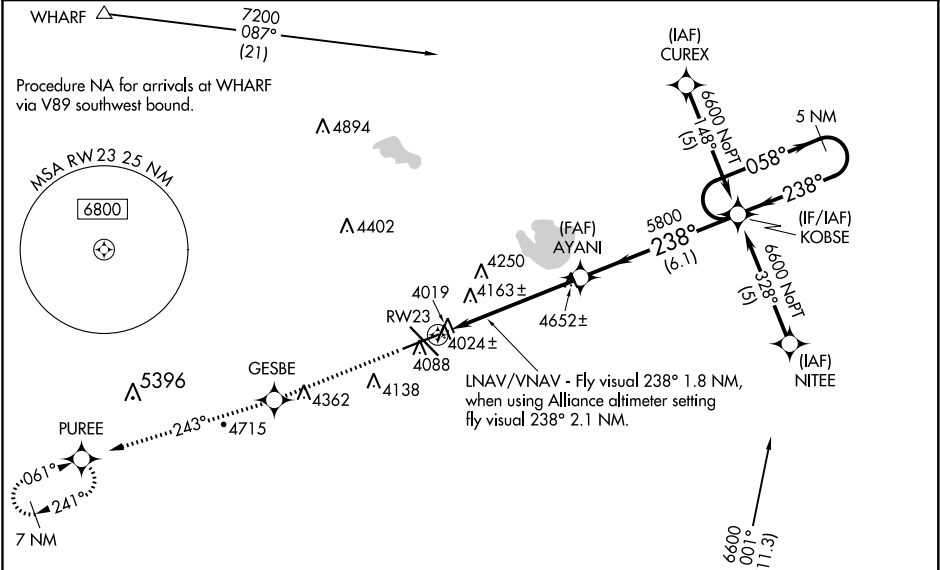
RNAV (GPS) RWY 23

WESTERN NEBRASKA RGNL/WILLIAM B HEILIG FIELD (BTF)

⚠ When local altimeter setting not received, use Alliance altimeter setting: increase LPV DA to 4347 feet and visibility ¼ SM; increase LNAV/VNAV DA to 4679 feet; increase all MDAs 100 feet and visibility Cats C and D ½ SM. Baro-VNAV NA when using Alliance altimeter setting. For uncompensated Baro-VNAV systems, LNAV/VNAV NA below -22°C (-7°F) or above 41°C (105°F). VDP NA when using Alliance altimeter setting. Visibility reduction by helicopters NA. DME/DME RNP-0.3 NA.

MISSED APPROACH: Climb to 6700 direct GESBE and via 243° track to PUREE and hold.

ASOS 121.025	DENVER CENTER 127.95 338.2	UNICOM 123.0 (CTAF) 1
------------------------	--------------------------------------	---------------------------------



ELEV 3967

D

TDZE 3967

238° to RWY 23
243° tr
058°
061°

8002 X 150
8229 X 150

Procedure NA for arrivals at MEILE via V169 southeast bound.

MEILE

5 NM Holding Pattern

GP 3.00° TCH 52

CATEGORY	A	B	C	D
LPV DA	4256-1 289 (300-1)			
LNAV/VNAV DA	4588-2 621 (700-2)			
LNAV MDA	4420-1 453 (500-1)	4420-1¼ 453 (500-1¼)	4420-1½ 453 (500-1½)	
C CIRCLING	4500-1 533 (600-1)	4560-1½ 593 (600-1½)	4740-2½ 773 (800-2½)	