

LOC/DME I-RMT	APP CRS	Rwy Idg	8279
110.35	126°	TDZE	3963
Chan 40 (Y)		Apt Elev	3967

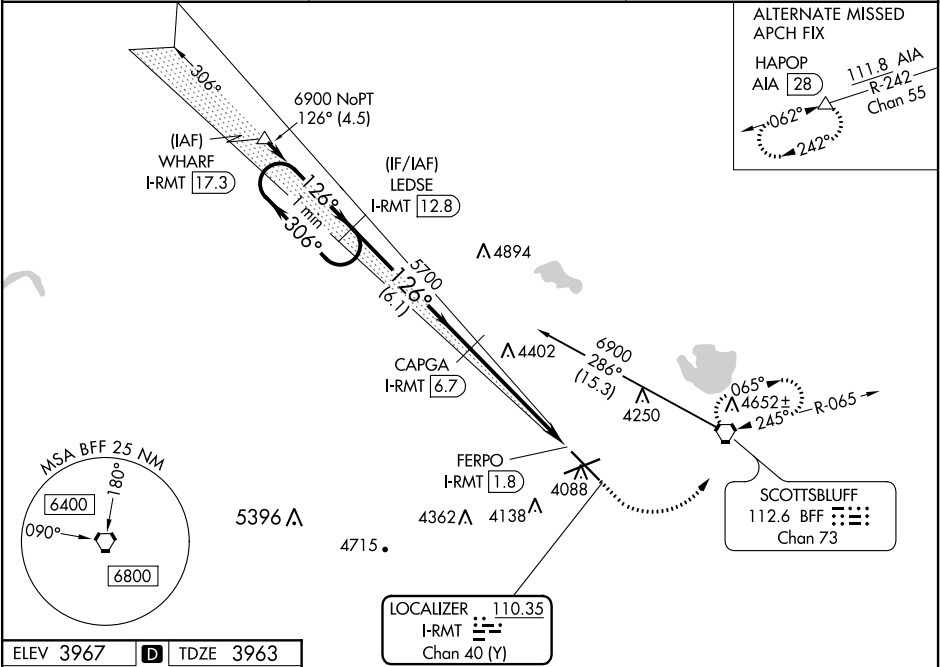
ILS or LOC/DME RWY 12  
WESTERN NEBRASKA RGNL/WILLIAM B HEILIG FIELD (BFF)

**⚠** When local altimeter setting not received, use Alliance altimeter setting and increase DA 91 feet; all MDAs 100 feet, and S-LOC 12 and Circling Cat B/C/D visibilities ¼ mile. For inoperative MALSR, when using Alliance altimeter setting, increase S-ILS 12 visibility to 1. VDP NA when using Alliance altimeter setting.

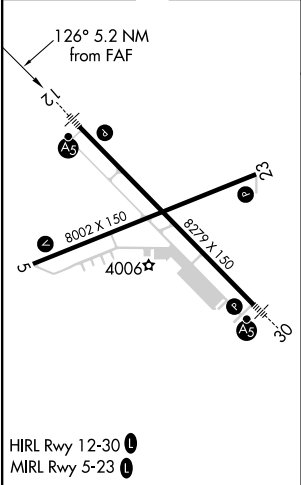
**MALSR**

**MISSED APPROACH:** Climb to 4500 then climbing left turn to 6900 direct BFF VORTAC and hold, continue climb-in-hold to 6900.

ASOS 121.025	DENVER CENTER 127.95 338.2	UNICOM 123.0 (CTAF) <b>0</b>
-----------------	-------------------------------	---------------------------------



ELEV 3967	<b>D</b>	TDZE 3963
-----------	----------	-----------



DME REQUIRED

ILS unusable from FERPO/1.8 DME inbound.				
One Minute Holding Pattern		LEDSE I-RMT 12.8	CAPGA I-RMT 6.7	4500 6900 BFF
6900 ← 306° 126° → 5700		5700	I-RMT 3.5	FERPO I-RMT 1.8
GS 3.00° TCH 57		6.1 NM	3.2 NM	1.7 NM 0.3
CATEGORY	A	B	C	D
S-ILS 12	4163-½ 200 (200-½)			
S-LOC 12	4640-½ 677 (700-½)	4640-1½ 677 (700-1½)	4640-1¾ 677 (700-1¾)	
<b>C</b> CIRCLING	4640-1 673 (700-1)	4640-2 673 (700-2)	4740-2½ 773 (800-2½)	

NC-2, 03 DEC 2020 to 31 DEC 2020

NC-2, 03 DEC 2020 to 31 DEC 2020