

VORTAC SLN	APP CRS	Rwy Idg	12300
117.1	183°	TDZE	1246
Chan 118		Apt Elev	1288

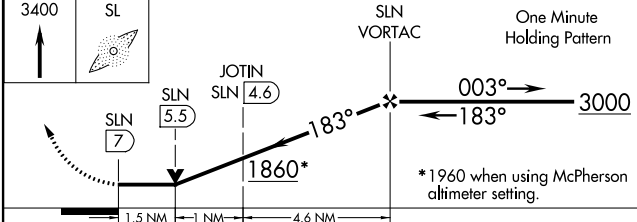
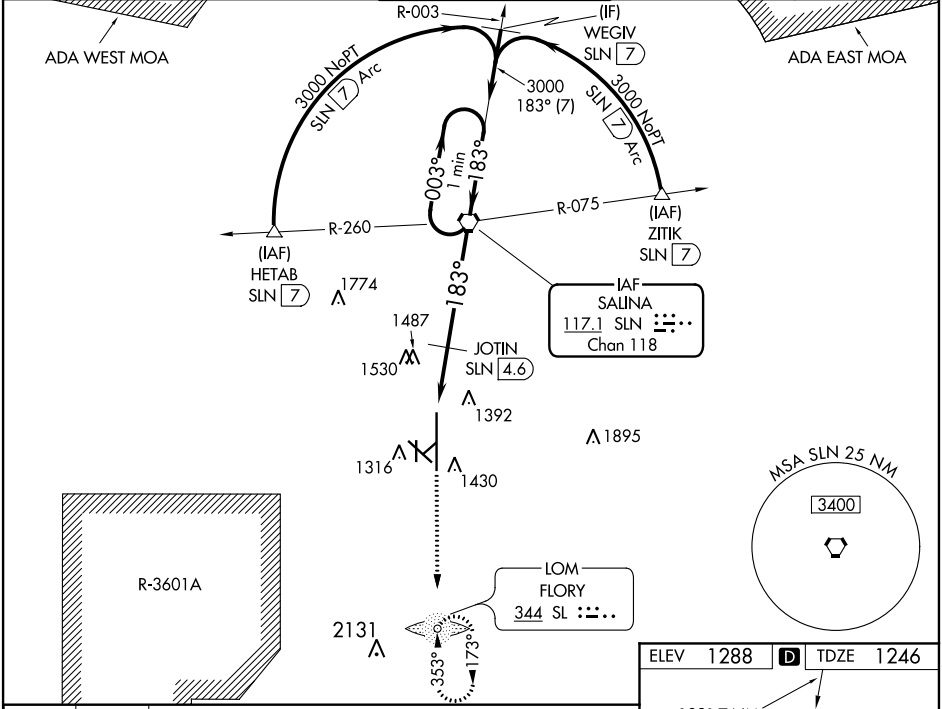
VOR RWY 17
SALINA RGNL (SLN)

⚠ Inoperative table does not apply to Cat C/D/E. Circling NA for Cat D/E southwest of Rwy 12-30. ADF required. When local altimeter setting not received, use McPherson altimeter setting and increase all MDA 100 feet and Cat C/D/E visibility ¼ mile and increase JOTIN fix minimums S-17 Cat C/D visibility ½ mile, Cat E visibility ½ mile, Circling Cat C/E visibility ¼ mile. VDP NA when using McPherson altimeter setting.

MALS

MISSED APPROACH: Climb to 3400 direct SL LOM and hold.

ATIS 120.15	KANSAS CITY CENTER 134.9 363.2	SALINA TOWER * 119.3 (CTAF) 0 257.7	GND CON 121.9 397.9	UNICOM 122.95
----------------	-----------------------------------	--	------------------------	------------------



CATEGORY	A	B	C	D	E
S-17	1860-¾ 614 (600-¾)		1860-1¾ 614 (600-1¾)	1860-2 614 (600-2)	1860-2¼ 614 (600-2¼)
CIRCLING	1860-1 572 (600-1)		1860-1¾ 572 (600-1¾)	1860-2 572 (600-2)	1920-2¼ 632 (700-2¼)
JOTIN FIX MINIMUMS					
S-17	1760-¾ 514 (500-¾)		1760-1½ 514 (500-1½)	1760-1¾ 514 (500-1¾)	
CIRCLING	1820-1 532 (600-1)		1840-1½ 552 (600-1½)	1840-2 552 (600-2)	1920-2¼ 632 (700-2¼)

ELEV 1288 **D** TDZE 1246

183° 7 NM from FAF

Knots	60	90	120	150	180
Min:Sec	7:00	4:40	3:30	2:48	2:20

NC-2, 03 DEC 2020 to 31 DEC 2020

NC-2, 03 DEC 2020 to 31 DEC 2020