

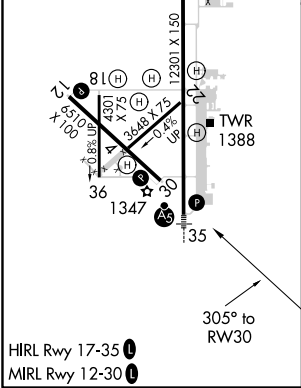
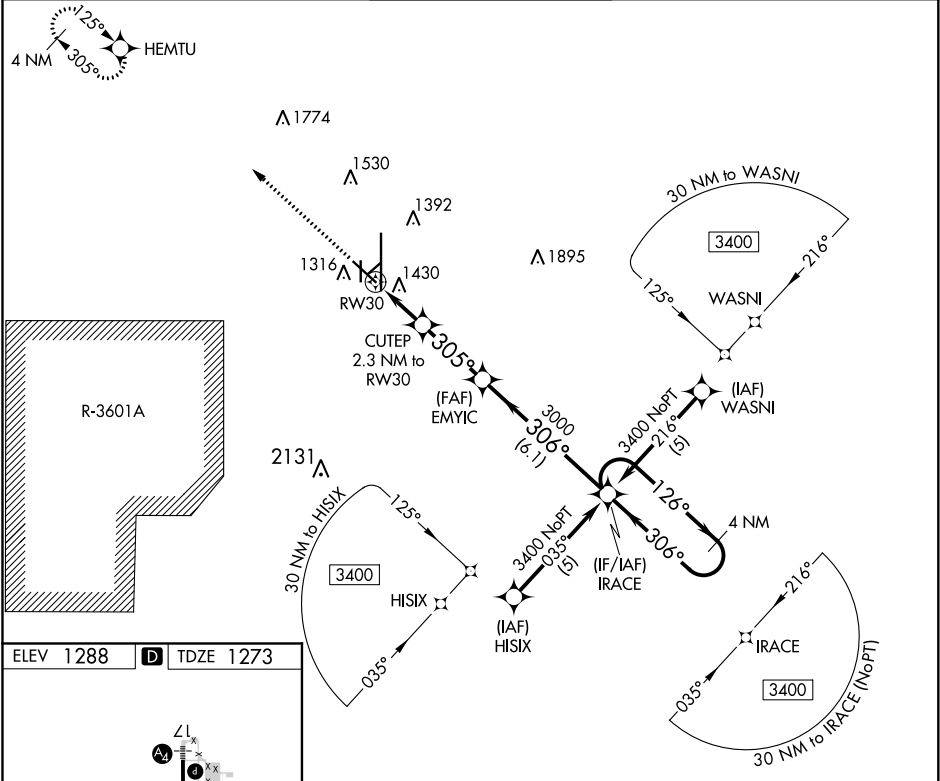
APP CRS 305°	Rwy Idg TDZE Apt Elev	6510 1273 1288
------------------------	-----------------------------	---



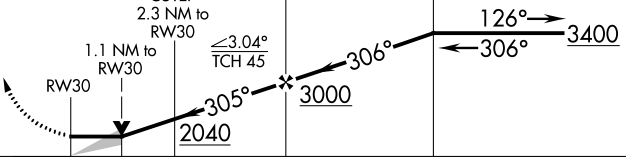
RNAV (GPS) RWY 30

SALINA RGNL (SLN)

<div><div>⚠</div><div>⚠</div></div> <div>Circling NA for Cat D southwest of runway 12-30. DME/DME RNP-0.3 NA. When local altimeter setting not received, use McPherson altimeter setting and increase all MDA 100 feet and LNAV Cat C/D and Circling Cat C visibility ¼ mile. VDP NA when using McPherson altimeter setting.</div>	MISSED APPROACH: Climb to 3400 direct HEMTU and hold.
--	--

ATIS 120.15	KANSAS CITY CENTER 134.9 363.2	SALINA TOWER ★ 119.3 (CTAF) 0 257.7	GND CON 121.9 397.9	UNICOM 122.95
-----------------------	--	---	-------------------------------	-------------------------



3400	HEMTU				
					
					
CATEGORY	A	B	C	D	
LNAV MDA	1680-1	407 (400-1)	1680-1¼ 407 (400-1¼)		
CIRCLING	1820-1	532 (600-1)	1840-1½ 552 (600-1½)	1840-2 552 (600-2)	