

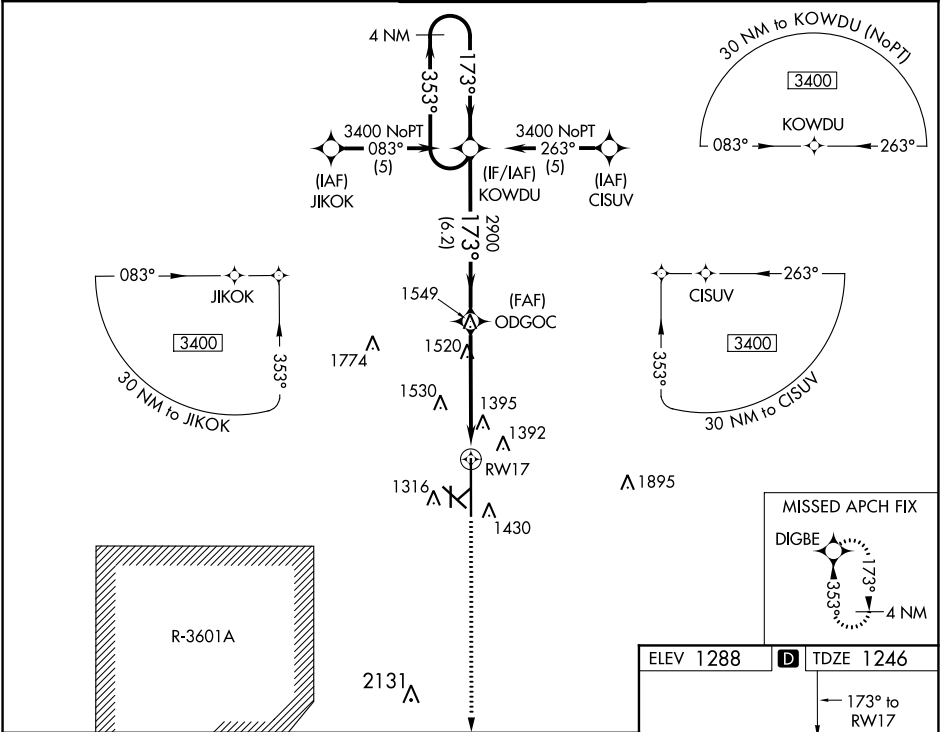
WAAS CH 70322 W17A	APP CRS 173°	Rwy Idg 12300 TDZE 1246 Apt Elev 1288
--	------------------------	--

RNAV (GPS) RWY 17

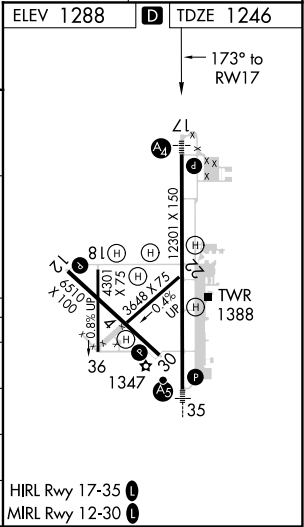
SALINA RGNL (SLN)

<div><div>▼</div><div>DME/DME RNP-0.3 NA. Baro-VNAV NA below -17°C (2°F). Circling NA for Cat D southwest of Rwy 12-30. Inoperative table does not apply.</div></div>	<div><div>MALS</div><div></div></div>	<div>MISSED APPROACH: Climb to 3400 direct DIGBE and hold.</div>
---	---------------------------------------	--

ATIS 120.15	KANSAS CITY CENTER 134.9 363.2	SALINA TOWER ★ 119.3 (CTAF) 257.7	GND CON 121.9 397.9	UNICOM 122.95
-----------------------	--	---	-------------------------------	-------------------------



4 NM Holding Pattern		KOWDU		3400 DIGBE	
3400 ← 353°		173° →		173°	
GP 3.00°		2900		RW17	
TCH 55		6.2 NM		5 NM	
CATEGORY	A	B	C	D	
LPV DA	1496-1		250 (300-1)		
LNAV/VNAV DA	1741-1¾		495 (500-1¾)		
LNAV MDA	1780-1	534 (500-1)	1780-1½	534 (500-1½)	1780-1¾
CIRCLING	1820-1¾	532 (600-1¾)	1840-1¾	552 (600-1¾)	1840-2
				552 (600-2)	



NC-2, 03 DEC 2020 to 31 DEC 2020

NC-2, 03 DEC 2020 to 31 DEC 2020