

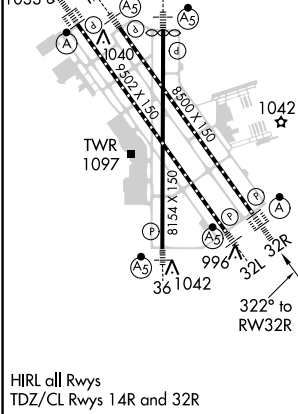
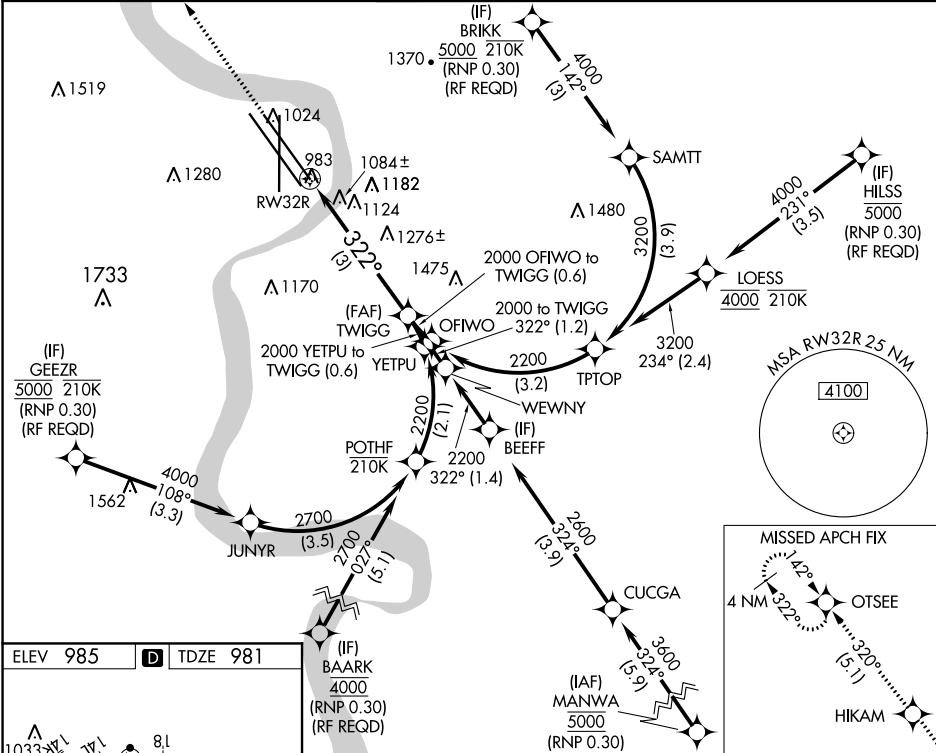
APP CRS	Rwy Idg	8500
322°	TDZE	981
	Apt Elev	985

RNAV (RNP) Z RWY 32R

EPPLEY AIRFIELD (OMA)

RNP AR APCH. RF required.	ALSIF-2 	MISSED APPROACH: Climb to 3300 direct HIKAM and track 320° to OTSEE and hold.
▼ For uncompensated Baro-VNAV systems, procedure NA below -19°C or above 54°C. For inop ALS, increase RNP 0.30 all Cats visibility to 1 1/4 SM.		

D-ATIS 120.4	OMAHA APP CON 120.1 354.05	OMAHA TOWER 132.1 256.9	GND CON 121.9	CLNC DEL 119.9
-----------------	-------------------------------	----------------------------	------------------	-------------------



3300 ↑	HIKAM ✦	tr 320° ✦	OTSEE ✦	
See planview for multiple IF locations.				
CATEGORY	A	B	C	D
RNP 0.11 DA	1313/26 332 (400-½)			
RNP 0.15 DA	1407/40 426 (500-¾)			
RNP 0.30 DA	1607-1⅜ 626 (700-1⅜)			
AUTHORIZATION REQUIRED				

NC-2, 03 DEC 2020 to 31 DEC 2020

NC-2, 03 DEC 2020 to 31 DEC 2020