

APP CRS	Rwy Idg	8013
178°	TDZE	982
	Apt Elev	985

RNAV (RNP) Z RWY 18

EPPLEY AIRFIELD (OMA)

▼

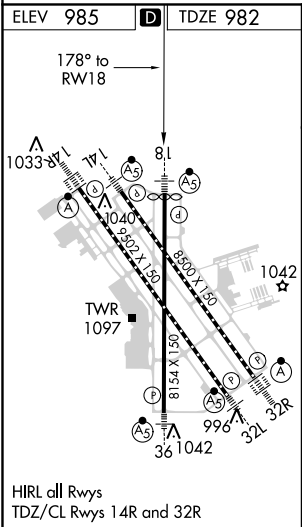
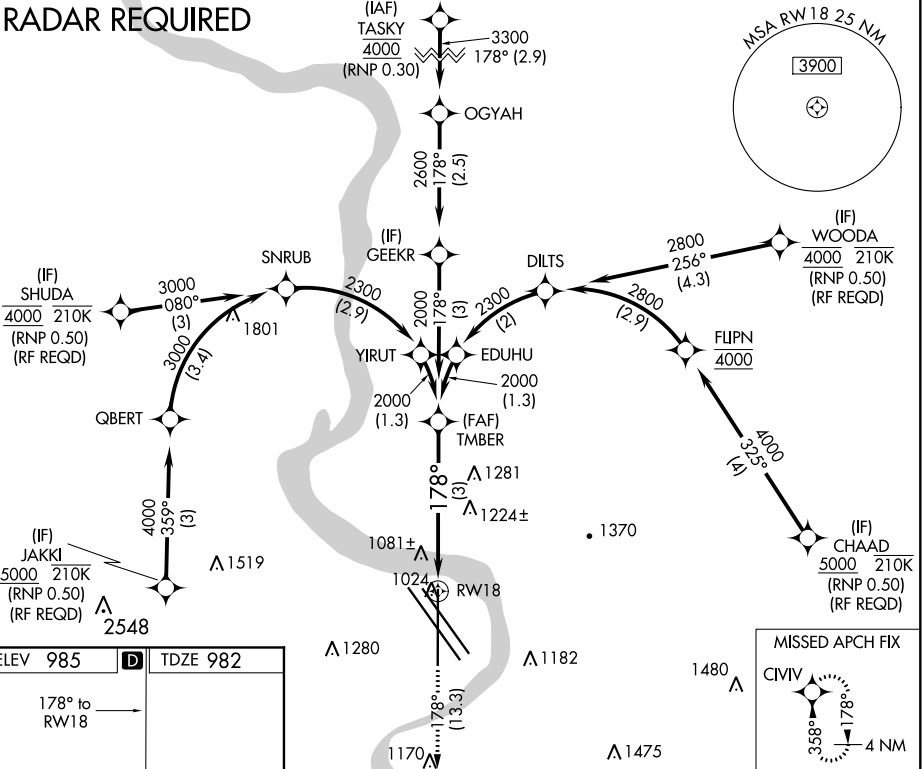
For uncompensated Baro-VNAV systems, procedure NA below -17°C (2°F) or above 54°C (130°F). For inoperative ALS, increase RNP 0.15 all Cats visibility to 1½ and RNP 0.30 all Cats visibility to 2. GPS required.

MALSR

MISSED APPROACH: Climb to 3000 on track 178° to CIVV and hold.

D-ATIS	OMAHA APP CON	OMAHA TOWER	GND CON	CLNC DEL
120.4	120.1 354.05	132.1 256.9	121.9	119.9

RADAR REQUIRED



<div><div>3000</div><div></div><div>CIVV</div><div>tr 178°</div></div>				
<div><div>RW18</div><div></div><div>See planview for multiple IF locations.</div><div>GP 3.00° TCH 51</div></div>				
CATEGORY	A	B	C	D
RNP 0.15 DA	1341/40 359 (400-¾)			
RNP 0.30 DA	1576-1 5/8 594 (600-1 5/8)			
AUTHORIZATION REQUIRED				