

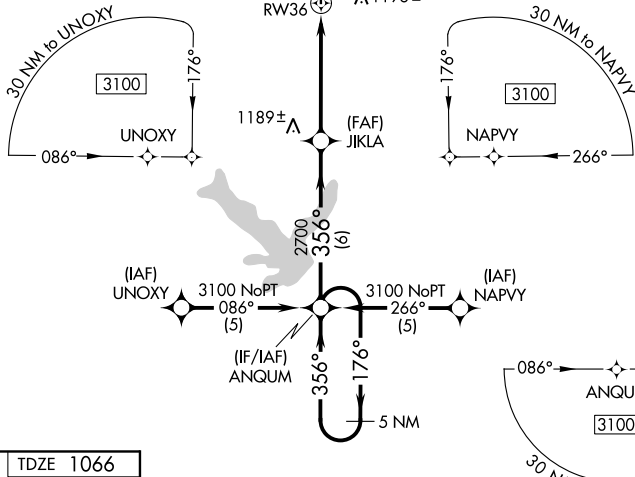
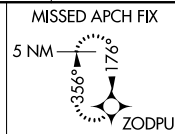
WAAS CH 81807 W36A	APP CRS 356°	Rwy Idg 7339 TDZE 1066 Apt Elev 1087
--	------------------------	---

RNAV (GPS) RWY 36

NEW CENTURY AIRCENTER (IXD)

	<p>DME/DME RNP-0.3 NA. For inoperative MALSR, increase LNAV Cat D visibility to 1 1/4 and LPV visibility to 1 all Cats. If local altimeter setting not received, use Johnson County Executive altimeter setting and increase all DA/MDAs 20 feet. VDP NA with Johnson County Executive altimeter setting.</p>		<p>MISSED APPROACH: Climb to 3100 direct ZODPU and hold.</p>
--	---	--	--

ASOS 135.325	KANSAS CITY APP CON 118.9 251.075	NEW CENTURY TOWER ★ 133.0 (CTAF) 0	GND CON 124.3	UNICOM 122.95
------------------------	---	--	-------------------------	-------------------------



ELEV 1087		TDZE 1066
-----------	--	-----------

