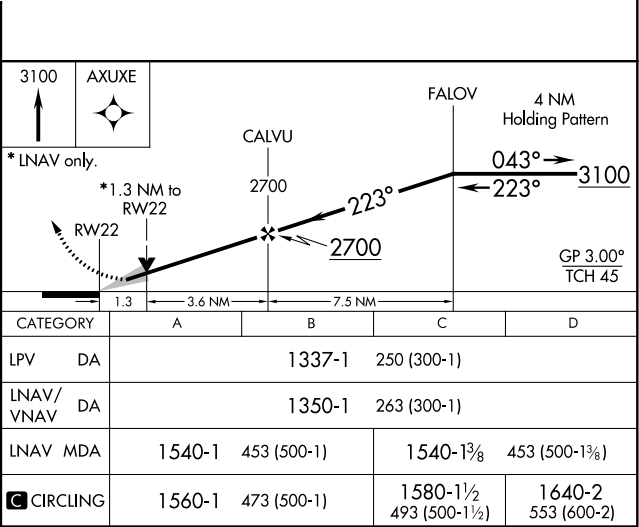
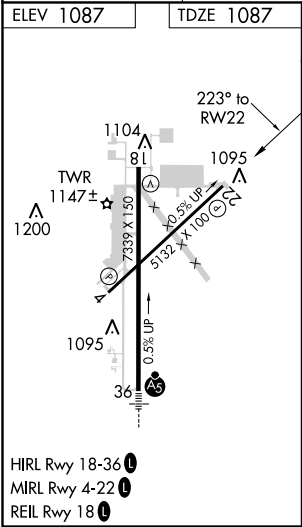
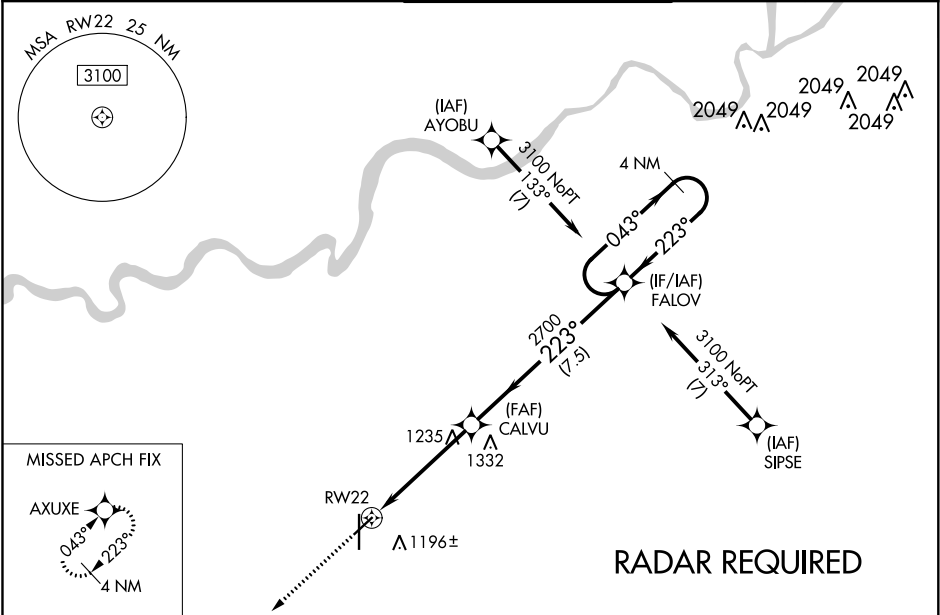


WAAS CH 45739 W22A	APP CRS 223°	Rwy Idg TDZE Apt Elev	5132 1087 1087
--	------------------------	-----------------------------	---

RNAV (GPS) RWY 22
NEW CENTURY AIRCENTER (IXD)

<p>⚠ For uncompensated Baro-VNAV systems, LNAV/VNAV NA below -17°C (-2°F) or above 54°C (130°F). Baro-VNAV and VDP NA when using Johnson County Executive altimeter setting. DME/DME RNP-0.3 NA. When local altimeter setting not received, use Johnson County Executive altimeter setting: increase LPV DA to 1355 feet, and LNAV/VNAV DA to 1368 feet, and all MDA 20 feet.</p>	MISSED APPROACH: Climb to 3100 direct AXUXE and hold.
---	---

ASOS 135.325	KANSAS CITY APP CON 118.9 251.075	NEW CENTURY TOWER ★ 133.0 (CTAF) 0	GND CON 124.3	UNICOM 122.95
------------------------	---	--	-------------------------	-------------------------



NC-2, 03 DEC 2020 to 31 DEC 2020

NC-2, 03 DEC 2020 to 31 DEC 2020