

ILS or LOC RWY 36
NEW CENTURY AIRCENTER (TXD)

MISSED APPROACH: Climb to 2700 then climbing left turn to 4000 on TOP VORTAC R-107 to RUGBB/MCI 25 DME and hold.

TOPEKA
117.8 TOP
Chan 125

LOCALIZER
110.9
HXD
Chan 46

KANSAS CITY
113.25 MCI
Chan 79(Y)

NAPOLEON
114.0 ANX
Chan 87

1104
71XAT

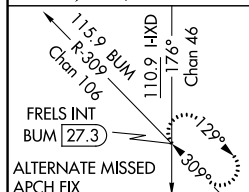
2048
3100 to SKINI
123°
(39.1)

2700 to SKINI
187°
(33.7)

4000 to SKINI
232°
(41.7)

1196±

Top
R-107

[illegible]