

VOR/DME LBF	Rwy Idg	4134
117.4	TDZE	2776
Chan 121	Apt Elev	2777

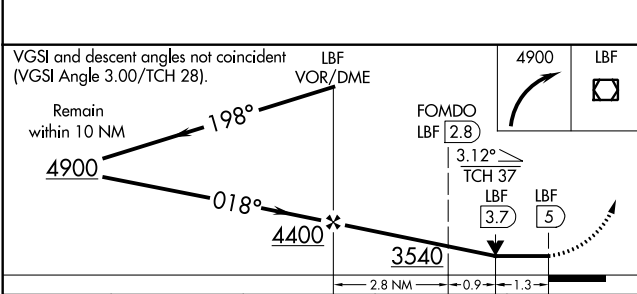
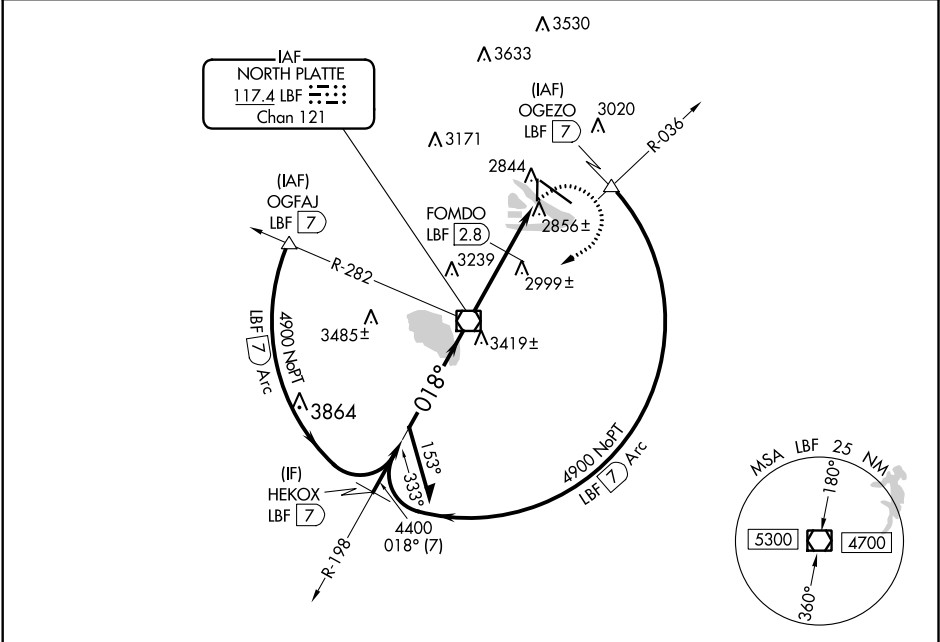
APP CRS
018°

VOR RWY 35

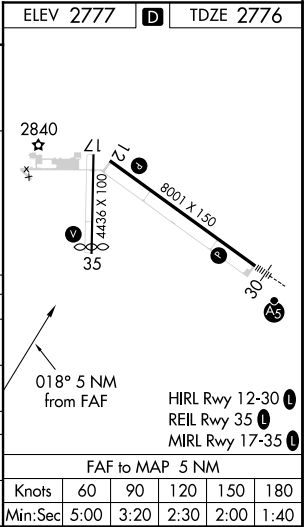
NORTH PLATTE RGNL AIRPORT LEE BIRD FIELD (LBF)

<p>⚠ Rwy 35 helicopter visibility reduction below 3/4 SM NA.</p>	<p>MISSED APPROACH: Climbing right turn to 4900 direct LBF VOR/DME and hold, continue climb-in-hold to 4900.</p>
---	---

ASOS 118.425	DENVER CENTER 132.7 226.675	CLNC DEL 132.7	UNICOM 123.0 (CTAF) 0
-----------------	--------------------------------	-------------------	---------------------------------



CATEGORY	A	B	C	D
S-35	3540-1 764 (800-1)	3540-1¼ 764 (800-1¼)	3540-2¼ 764 (800-2¼)	3540-2½ 764 (800-2½)
C CIRCLING	3540-1 763 (800-1)	3540-1¼ 763 (800-1¼)	3540-2¼ 763 (800-2¼)	3560-2½ 783 (800-2½)
FOMDO FIX MINIMUMS				
S-35	3220-1 503 (600-1)	444 (500-1)	3220-1¼ 444 (500-1¼)	3220-1½ 444 (500-1½)
C CIRCLING	3280-1 503 (600-1)	3320-1 543 (600-1)	3420-1¾ 643 (700-1¾)	3560-2½ 783 (800-2½)



NC-2, 03 DEC 2020 to 31 DEC 2020

NC-2, 03 DEC 2020 to 31 DEC 2020