

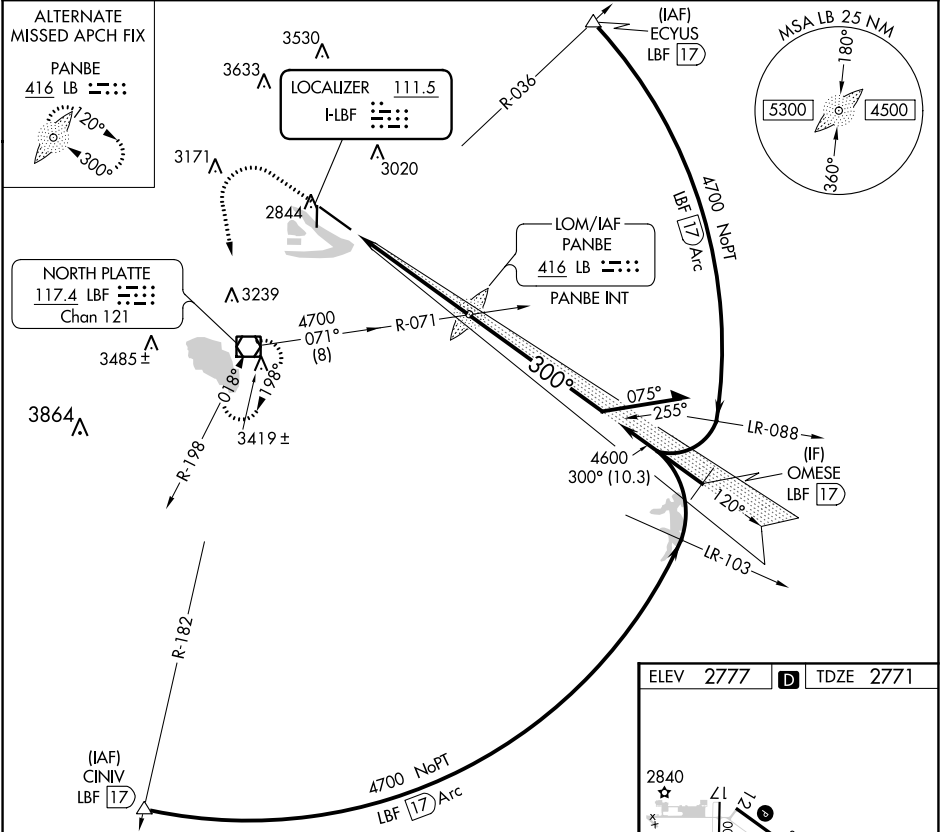
LOC I-LBF <b>111.5</b>	APP CRS <b>300°</b>	Rwy Idg TDZE Apt Elev <b>8000</b> <b>2771</b> <b>2777</b>
---------------------------	------------------------	--------------------------------------------------------------------------

ILS or LOC RWY 30

NORTH PLATTE RGNL AIRPORT LEE BIRD FIELD (LBF')

ADF or DME required for procedure entry.	MALSR 	MISSED APPROACH: Climb to 4900 then left turn direct LBF VOR/DME and hold.
------------------------------------------	-----------	----------------------------------------------------------------------------

ASOS <b>118.425</b>	DENVER CENTER <b>132.7 226.675</b>	CLNC DEL <b>132.7</b>	UNICOM <b>123.0 (CTAF)</b>
------------------------	---------------------------------------	--------------------------	-------------------------------



4900 ↑	LBF 	LB PANBE LOM/INT 4522	Remain within 10 NM	GS 3.00° TCH 53
CATEGORY	A	B	C	D
S-ILS 30	2971-1/2 200 (200-1/2)			
S-LOC 30	3200-1/2 429 (500-1/2)	3200-3/4 429 (500-3/4)		
CIRCLING	3280-1 503 (600-1)	3320-1 543 (600-1)	3420-1 3/4 643 (700-1 3/4)	3560-2 1/2 783 (800-2 1/2)

ELEV 2777	TDZE 2771
300° 5.3 NM from FAF	
HIRL Rwy 12-30	
REIL Rwy 35	
MIRL Rwy 17-35	
FAF to MAP 5.3 NM	
Knots	60 90 120 150 180
Min:Sec	5:18 3:32 2:39 2:07 1:46

NC-2, 03 DEC 2020 to 31 DEC 2020

NC-2, 03 DEC 2020 to 31 DEC 2020