

WAAS CH 40137 W17A	APP CRS 177°	Rwy Idg 5400 TDZE 1219 Apt Elev 1219
--	------------------------	---

RNAV (GPS) RWY 17

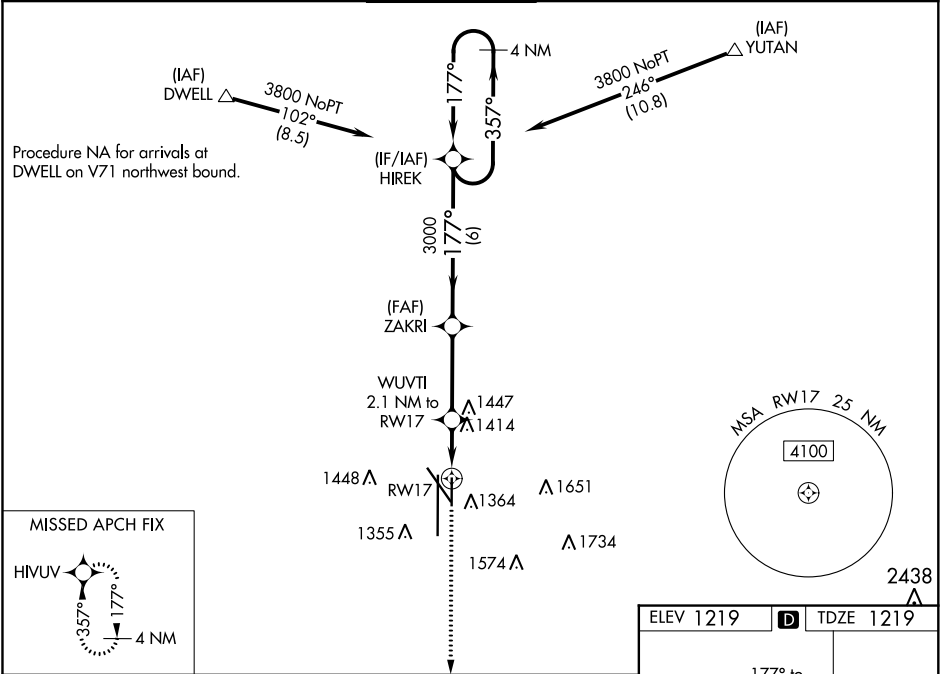
LINCOLN (LNK)

⚠

Baro-VNAV NA when using Beatrice altimeter setting. For uncompensated Baro-VNAV systems, LNAV/VNAV NA below -22°C (-7°F) or above 54°C (130°F). DME/DME RNP-0.3 NA. When local altimeter setting not received, use Beatrice altimeter setting and increase all DA 91 feet, and all MDA 100 feet, increase LPV and LNAV/VNAV all Cats visibility ¼ mile, increase LNAV Cats C/D and Circling Cats C/D visibility ¼ mile.

MISSED APPROACH:
Climb to 3300 direct
HIVUV and hold.

ATIS 118.05 290.9	OMAHA APP CON 124.0 270.3	LINCOLN TOWER* 118.5(CTAF) 253.5	GND CON 121.9 275.8	CLNC DEL 120.7 225.4	UNICOM 122.95
-----------------------------	-------------------------------------	--	-------------------------------	--------------------------------	-------------------------



3300 ↑ HIVUV	WUVTI 2.1 NM to RW17	ZAKRI 3000	HIREK 3000	4 NM Holding Pattern	357° → ← 177° 3800
* LNAV only.	* 1.3 NM to RW17				GP 3.00° TCH 44
1.3 NM	0.8 NM	3.4 NM	6 NM		
CATEGORY	A	B	C	D	
LPV DA	1419-¾ 200 (200-¾)				
LNAV/VNAV DA	1615-1⅜ 396 (400-1⅜)				
LNAV MDA	1680-1	461 (500-1)	1680-1⅜	461 (500-1⅜)	
CIRCLING	1680-1 461 (500-1)	1760-1 541 (600-1)	1820-1¾ 601 (700-1¾)	1960-2½ 741 (800-2½)	

