

WAAS CH 42930 W14A	APP CRS 142°	Rwy Idg 8286 TDZE 1199 Apt Elev 1219
--	------------------------	---

RNAV (GPS) RWY 14

LINCOLN (LNK)

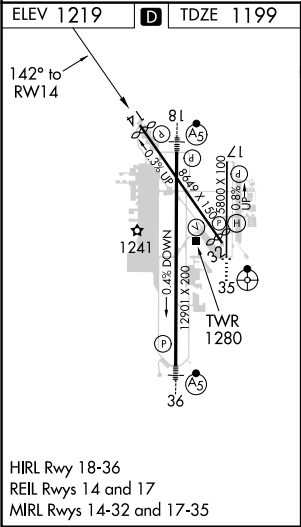
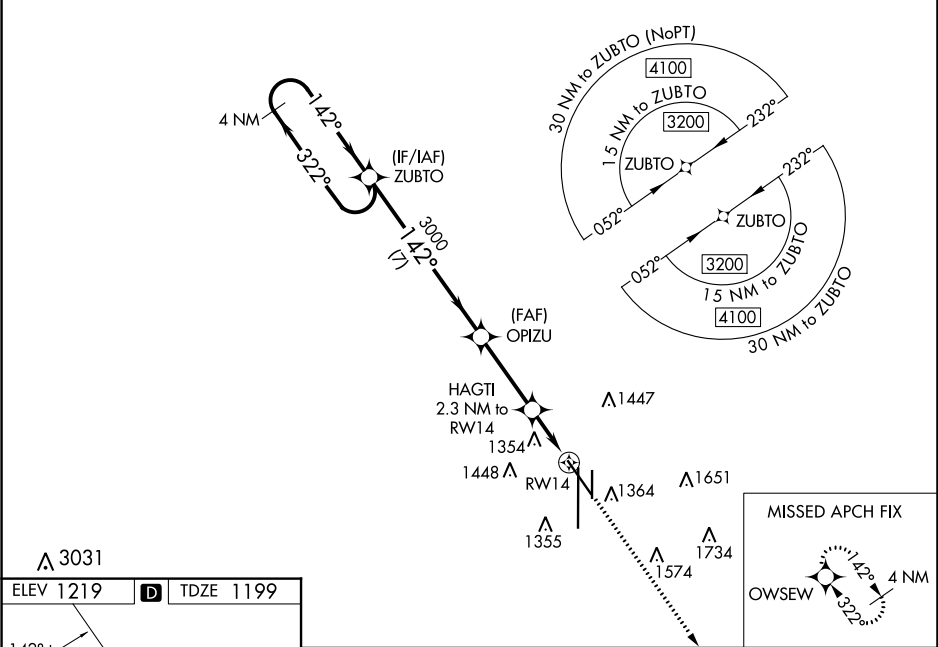
▼

▲

For uncompensated Baro-VNAV systems, LNAV/VNAV NA below -25°C (-13°F) or above 54°C (130°F). DME/DME RNP-0.3 NA. When local altimeter setting not received, use Barometric altimeter setting and increase all DA 91 feet and all MDA 100 feet, increase LPV all Cats and LNAV/VNAV all Cats visibility ½ mile, increase LNAV Cats C/D and Circling Cats C/D visibility ¼ mile. Helicopter visibility reduction below ¾ SM NA. Baro-VNAV and VDP NA when using Barometric altimeter setting.

MISSED APPROACH: Climb to 3100 direct OWSEW and hold.

ATIS 118.05 290.9	OMAHA APP CON 124.0 270.3	LINCOLN TOWER* 118.5(CTAF) 253.5	GND CON 121.9 275.8	CLNC DEL 120.7 225.4	UNICOM 122.95
-----------------------------	-------------------------------------	--	-------------------------------	--------------------------------	-------------------------



HIRL Rwy 18-36
REIL Rwy 14 and 17
MIRL Rwy 14-32 and 17-35

4 NM Holding Pattern		ZUBTO	OPIZU	HAGTI 2.3 NM to RWY 14	3100 OWSEW
3200 ← 322°		142° →	3000	*1960	*LNNAV only.
GP 3.00°		TCH 48			
		7 NM	3.2 NM	1.1 NM	1.2 NM
CATEGORY	A	B	C	D	
LPV DA	1449-1 250 (300-1)				
LNAV/VNAV DA	1449-1 250 (300-1)				
LNAV MDA	1620-1	421 (500-1)	1620-1¼	421 (500-1¼)	
CIRCLING	1720-1 501 (600-1)	1760-1 541 (600-1)	1760-1½ 541 (600-1½)	1820-2 601 (700-2)	