

LOC I-LNK

109.9

APP CRS

357°

Rwy Idg

12901

TDZE

1175

Apt Elev

1219

ILS or LOC RWY 36

LINCOLN (LNK)

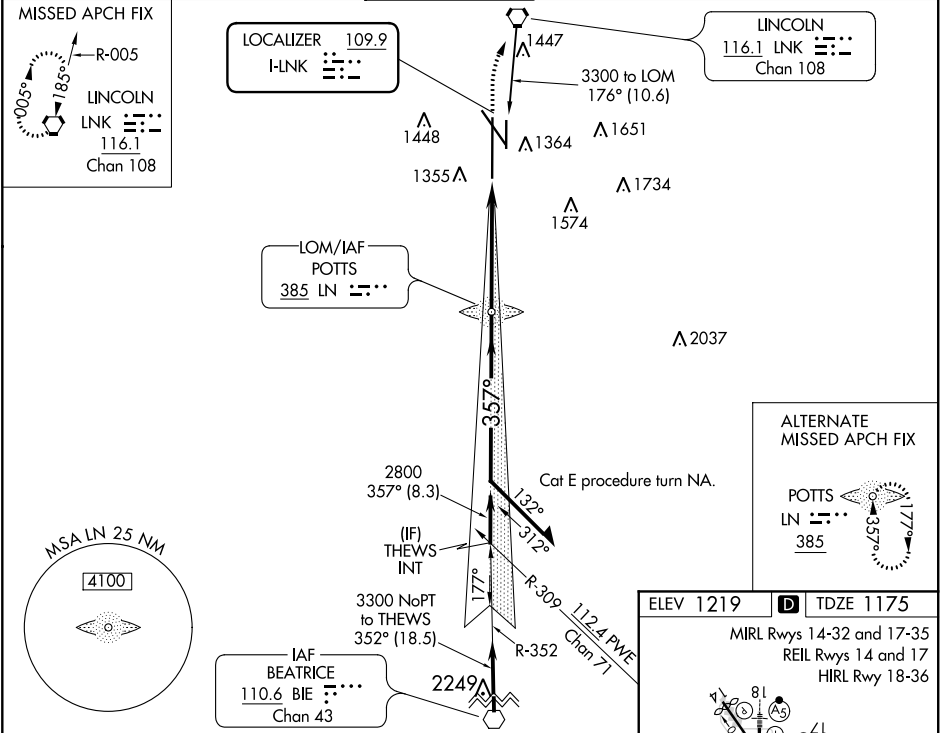
⚠ When local altimeter setting not received use Beatrice altimeter setting and increase all DA 91 feet and all MDA 100 feet, increase S-LOC 36 Cat C/D/E visibility to 1 ¾, Circling Cat C visibility to 1 ¾, and Cat D visibility to 2 ¼. For inop MALSR, increase S-ILS 36 Cat E visibility to RVR 4000, S-LOC 36 Cat E visibility to 1 ¾. For inop MALSR when using Beatrice altimeter setting, increase S-ILS 36 all Cats visibility to RVR 4500, S-LOC 36 Cat E visibility to 1 ¾. * RVR 1800 authorized with use of FD or AP or HUD to DA (NA when using Beatrice altimeter setting).

MALSR

MISSED APPROACH:

Climb to 1700 then climbing right turn to 3000 direct LNK VORTAC and hold.

ATIS	OMAHA APP CON	LINCOLN TOWER*	GND CON	CLNC DEL	UNICOM
118.05 290.9	124.0 270.3	118.5 (CTAF) 253.5	121.9 275.8	120.7 225.4	122.95



<div> <div>Remain within 10 NM</div> <div> <div>3300</div> <div>2788</div> <div>2800</div> </div> <div> <div>GS 3.00°</div> <div>TCH 56</div> </div> </div>		<div> <div>LN LOM</div> <div>1700</div> <div>3000</div> <div>LNK</div> </div>		<div> <div>4.8 NM</div> <div>357° 4.8 NM from FAF</div> </div>	
CATEGORY	A	B	C	D	E
S-ILS 36*	1375/24 200 (200-½)				
S-LOC 36	1680/24	505 (500-½)	1680/55	505 (500-1)	
CIRCLING	1680-1 461 (500-1)	1760-1 541 (600-1)	1760-1½ 541 (600-1½)	1820-2 601 (700-2)	2040-3 821 (900-3)
<div> <div>FAF to MAP 4.8 NM</div> <div> <div>Knots</div> <div>60 90 120 150 180</div> </div> <div> <div>Min:Sec</div> <div>4:48 3:12 2:24 1:55 1:36</div> </div> </div>					