

HI-VOR/DME or TACAN RWY 36

VORTAC LNK 116.1 Chan 108	APCH CRS 360°	Rwy Idg 12,901 TDZE 1175 Arpt Elev 1219
---	-------------------------	--

JAL-232 [USAF]

LINCOLN (KLNK)

T * When ALS inop, increase CAT E vis to 1 $\frac{3}{8}$ miles.
 ** When ALS inop. increase CAT CDE vis to 1 $\frac{3}{8}$ miles.



MISSED APPROACH: Climb to 3000 direct LNK VORTAC then via LNK R-360 to BUMBE 12 DME and hold.

ATIS
118.05 290.9

OMAHA APP CON
124.0 270.3

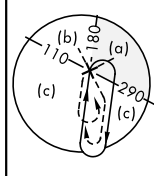
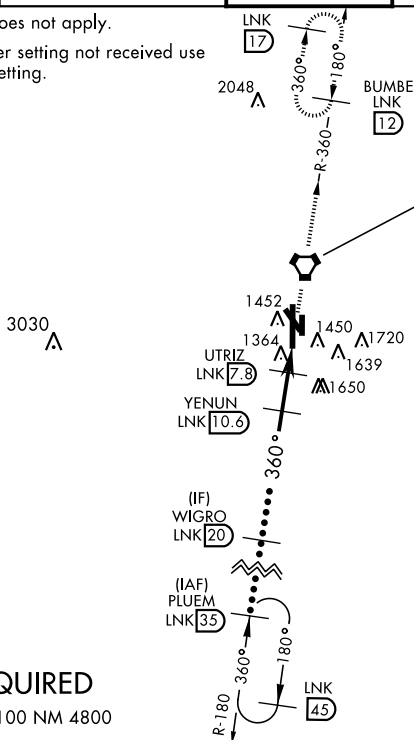
LINCOLN TOWER ★
118.5 253.5

GND CON
121.9 275.8

CLNC DEL
120.7 225.4

Inoperative table does not apply.

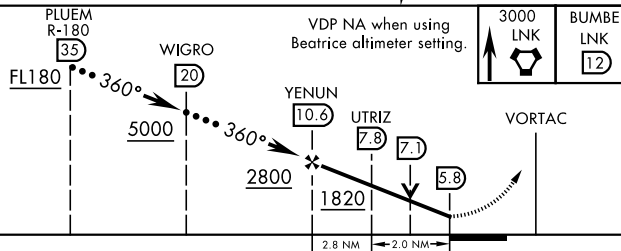
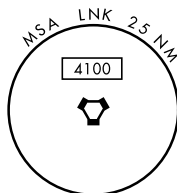
When local altimeter setting not received use Beatrice altimeter setting.



LINCOLN
116.1 LNK 
Chan 108

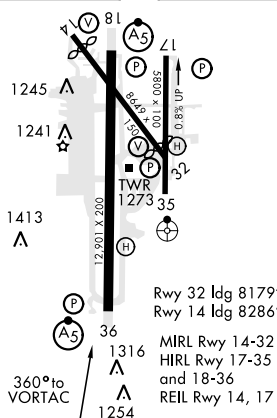
RADAR REQUIRED

EMERG SAFE ALT 100 NM 4800



CATEGORY	C	D	E
S-36 *	1620-7 $\frac{1}{2}$	445	(500-7 $\frac{1}{2}$)
CIRCLING	1760-1 $\frac{1}{2}$ 541 (600-1 $\frac{1}{2}$)	1820-2 601 (700-2)	2040-3 821 (900-3)
BEATRICE ALTIMETER SETTING			
S-36 **	1720-1 $\frac{1}{8}$	545	(600-1 $\frac{1}{8}$)
CIRCLING	1860-1 $\frac{1}{2}$ 641 (700-1 $\frac{1}{2}$)	1920-2 $\frac{1}{4}$ 701 (800-2 $\frac{1}{4}$)	2140-3 $\frac{1}{4}$ 921 (1000-3 $\frac{1}{4}$)

ELEV 1219		TDZE 1175
-----------	--	-----------



Rwy 32 Idg 8179
Rwy 14 Idg 8286

MIRL Rwy 14-32
HIRL Rwy 17-35
and 18-36
REIL Rwy 14, 17

LINCOLN, NEBRASKA

40°51'N-96°45'W

LINCOLN (KLNK)

Amdt 5 08MAR12

HI-VOR/DME or TACAN RWY 36