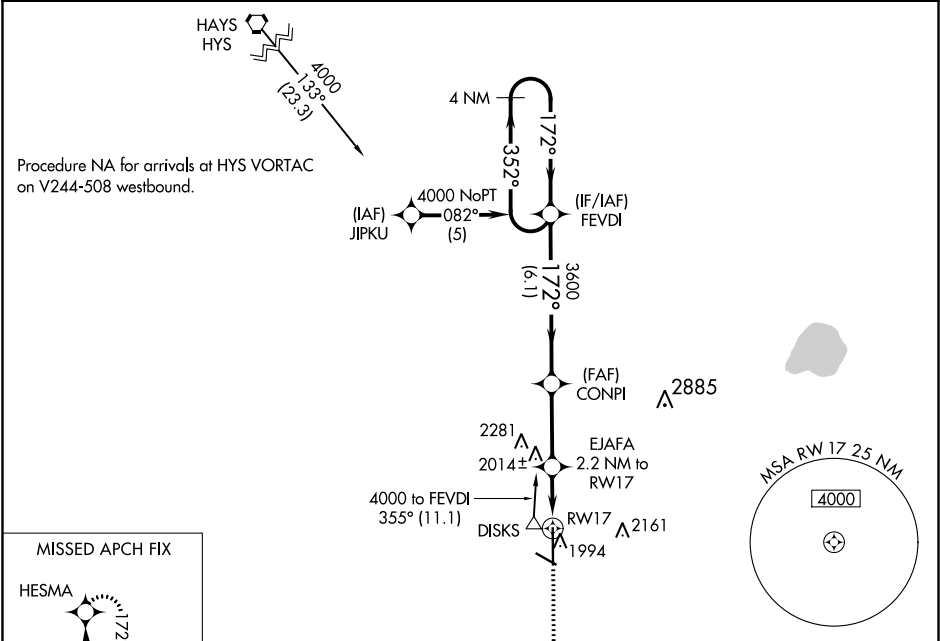


WAAS CH 70617 W17A	APP CRS 172°	Rwy Idg 7851 TDZE 1884 Apt Elev 1887
--	------------------------	---

RNAV (GPS) RWY 17
GREAT BEND MUNI (GBD)

⚠ DME/DME RNP-0.3 NA. For uncompensated Baro-VNAV systems, LNAV/VNAV NA below -18°C (0°F) or above 54°C (130°F).	MISSED APPROACH: Climb to 3600 direct HESMA and hold.
--	---

AWOS-3PT 119.275	KANSAS CITY CENTER 118.8 322.425	UNICOM 122.8 (CTAF) 1
----------------------------	--	---------------------------------



MISSED APCH FIX HESMA 172° 352° 4 NM				
VGSi and RNAV glidepath angles not coincident (VGSi Angle 3.50/TCH 38)				
4 NM Holding Pattern 4000 ← 352° 172° → GP 3.00° TCH 45 FEVDI CONPI EJAFA 2.2 NM to RW17 3600 *2620 *1 NM to RW17 RW17 *LNNAV only HESMA 3600				
← 6.1 NM → 3 NM → 1.2 NM → 1 NM →				
CATEGORY	A	B	C	D
LPV DA	2084-3/4 200 (200-3/4)			
LNAV/VNAV DA	2282-1 1/2 398 (400-1 1/2)			
LNAV MDA	2280-1 396 (400-1)		2280-1 1/4 396 (400-1 1/4)	
CIRCLING	2300-1 413 (500-1)	2340-1 453 (500-1)	2340-1 1/2 453 (500-1 1/2)	2500-2 1/2 613 (700-2 1/2)

