
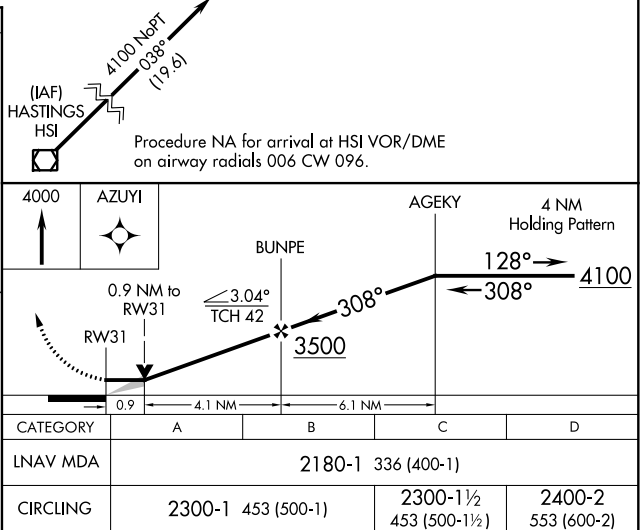
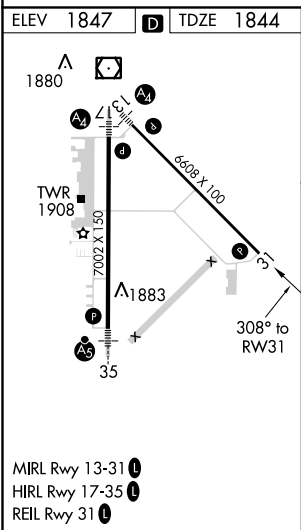
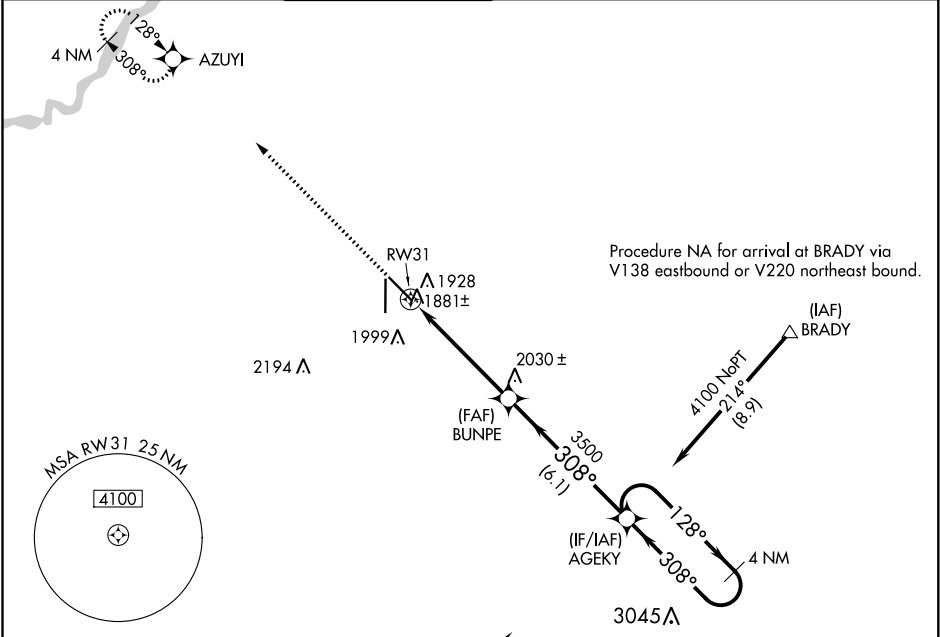


APP CRS	Rwy Idg	6608
308°	TDZE	1844
	Apt Elev	1847

RNAV (GPS) RWY 31
CENTRAL NEBRASKA RGNL (GRI)

 DME/DME RNP-0.3 NA. If local alimeter setting not received, use Aurora alimeter setting and increase all MDAs 60 feet. VDP NA when using Aurora alimeter setting.	MISSED APPROACH: Climb to 4000 direct AZUYI and hold.
--	--

ATIS 127.4	MINNEAPOLIS CENTER 119.4 278.8	GRAND ISLAND TOWER ★ 118.2 (CTAF) 0 259.3	GND CON 121.9 259.3	CLNC DEL 121.9 126.05 (when tower closed)	UNICOM 122.95
----------------------	--	---	-------------------------------	---	-------------------------



NC-2, 03 DEC 2020 to 31 DEC 2020

NC-2, 03 DEC 2020 to 31 DEC 2020