

APP CRS
335°

Rwy Idg **5318**
TDZE **769**
Apt Elev **771**

RNAV (GPS) RWY 34
SHERMAN AAF (FLV)

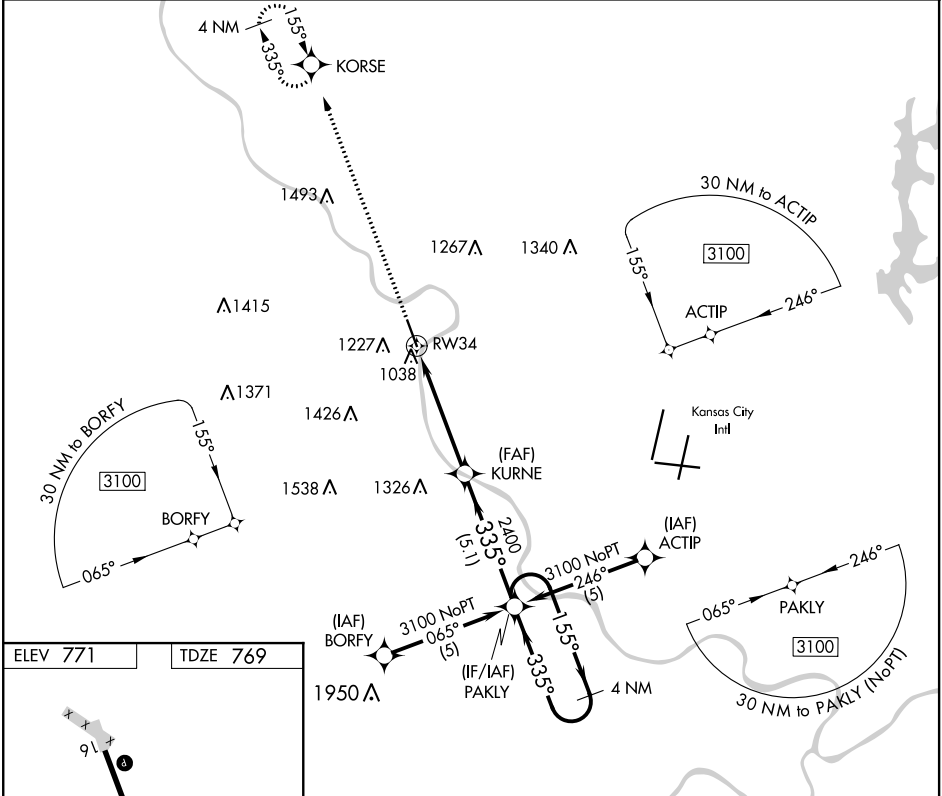
RNP APCH.

▼ When local alimeter setting not received, use Kansas City Intl alimeter setting.
▲ NA Circling not authorized west of Rwy 16-34. Procedure NA at night.

MISSED APPROACH: Climb to 3000 direct KORSE and hold.

KANSAS CITY APP CON
124.7 284.7

CTAF
126.2



ELEV 771

TDZE 769

3000 KORSE

Visual Segment - Obstacles.

PAKLY 4 NM Holding Pattern

KURNE

RW34

2400

335°

155°

3100

4.9 NM

5.1 NM

CATEGORY	A	B	C	D
LNAV MDA	1560-1 791 (800-1)	1560-1¼ 791 (800-1¼)	1560-2¼ 791 (800-2¼)	NA
CIRCLING	1560-1 789 (800-1)	1560-1¼ 789 (800-1¼)	1560-2¼ 789 (800-2¼)	NA