

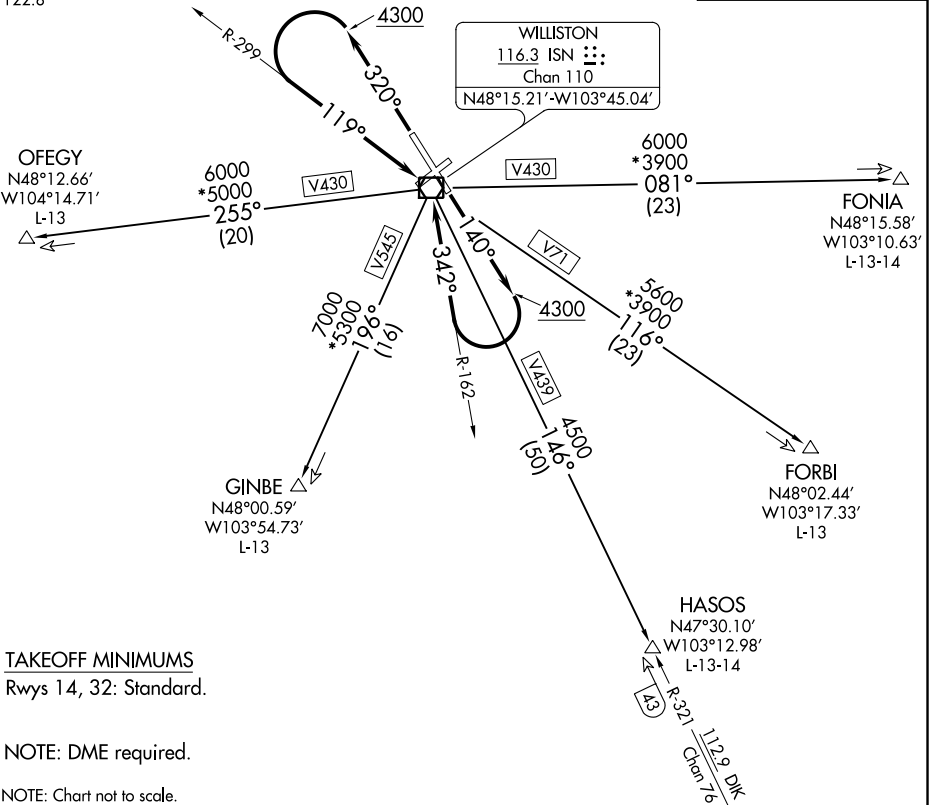
WILLISTON FIVE DEPARTURE

AL-11234 (FAA)

WILLISTON BASIN INTL (XWA)
WILLISTON, NORTH DAKOTA

SALT LAKE CENTER
126.85 305.2
CTAF
122.8

TOP ALTITUDE:
ASSIGNED BY ATC



DEPARTURE ROUTE DESCRIPTION

TAKEOFF RUNWAY 14: Climb on heading 140° to 4300 then climbing right turn to intercept ISN VOR/DME R-162 to ISN VOR/DME, thence. . . .

TAKEOFF RUNWAY 32: Climb on heading 320° to 4300 then climbing left turn to intercept ISN VOR/DME R-299 to ISN VOR/DME, thence. . . .

. . . on (transition). Maintain ATC assigned altitude. Expect filed altitude 10 minutes after departure.

FONIA TRANSITION (ISN5.FONIA): From over ISN VOR/DME on ISN R-081 to FONIA.

FORBI TRANSITION (ISN5.FORBI): From over ISN VOR/DME on ISN R-116 to FORBI.

GINBE TRANSITION (ISN5.GINBE): From over ISN VOR/DME on ISN R-196 to GINBE.

HASOS TRANSITION (ISN5.HASOS): From over ISN VOR/DME on ISN R-146 and DIK R-321 to HASOS.

OFEGY TRANSITION (ISN5.OFEGY): From over ISN VOR/DME on ISN R-255 to OFEGY.

WILLISTON FIVE DEPARTURE

(ISN5.ISN) 21MAY20

WILLISTON, NORTH DAKOTA
WILLISTON BASIN INTL (XWA)

NC-1, 03 DEC 2020 to 31 DEC 2020

NC-1, 03 DEC 2020 to 31 DEC 2020