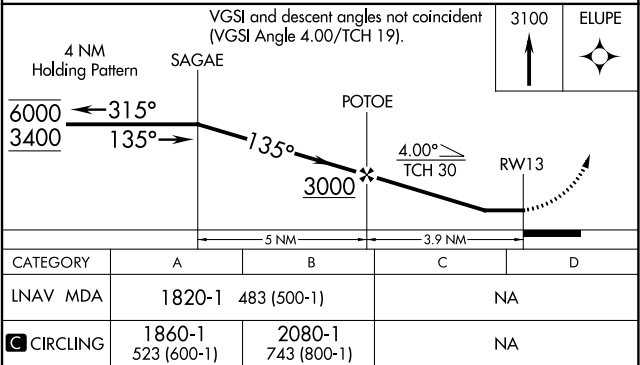
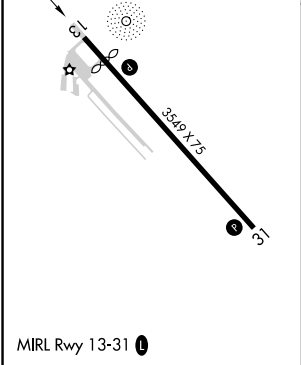
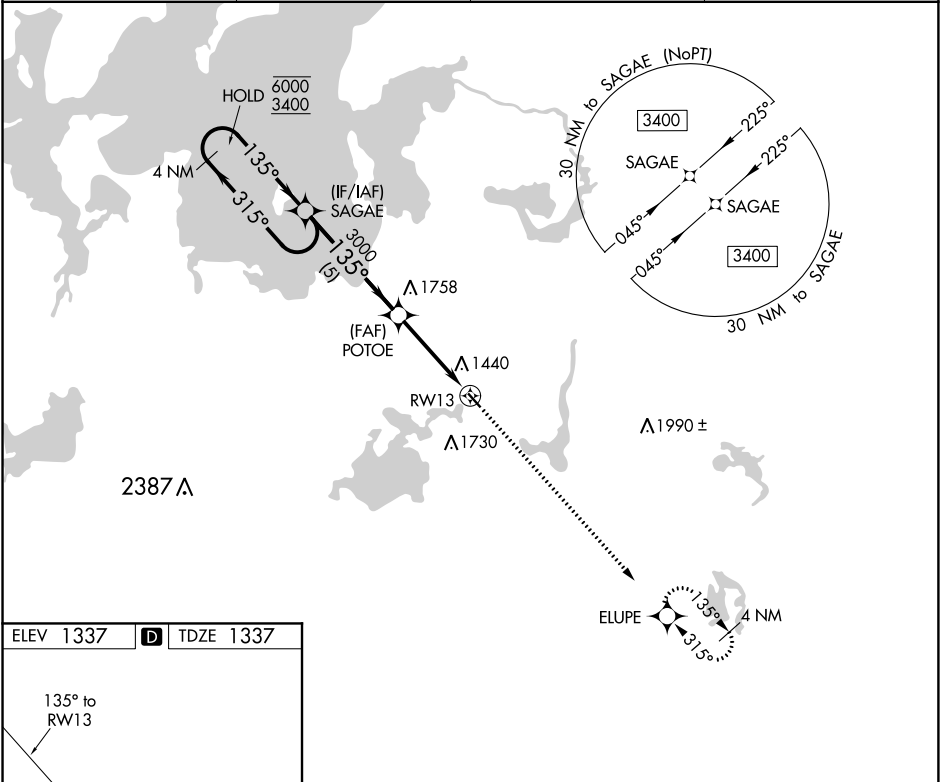


APP CRS	Rwy Idg	3109
135°	TDZE	1337
	Apt Elev	1337

RNAV (GPS) RWY 13

LONGVILLE MUNI (XVG)

RNP APCH.		MISSED APPROACH: Climb to 3100 direct ELUPE and hold.	
	Procedure NA at night.		
	Rwy 13 helicopter visibility reduction below 1 SM NA.		
AWOS-3	MINNEAPOLIS CENTER	GCO	CTAF
118.275	118.05 239.0	121.725	122.90



NC-1, 03 DEC 2020 to 31 DEC 2020

NC-1, 03 DEC 2020 to 31 DEC 2020