

WAAS CH 48937 W31A	APP CRS 304°	Rwy Idg 3300 TDZE 992 Apt Elev 993
--	------------------------	---

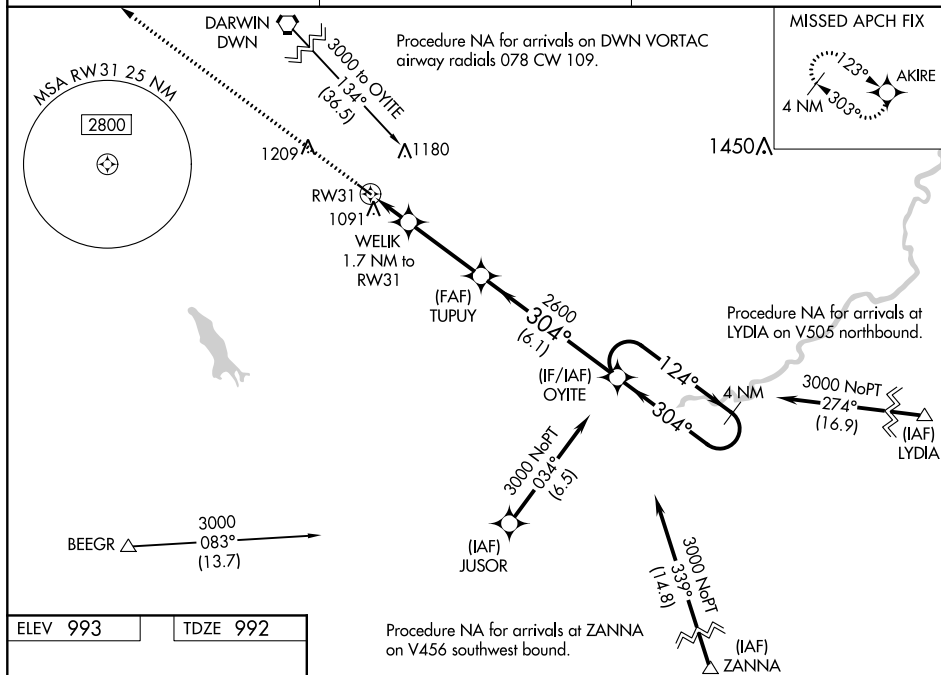
RNAV (GPS) RWY 31
GLENCOE MUNI (GYL)

GLENCOE MUNI (GYL)

- A** Baro-VNAV NA when using Hutchinson altimeter setting. For uncompensated Baro-VNAV systems, LNAV/VNAV NA below -16°C (4°F) or above 54°C (130°F). DME DME/RNP-0.3 NA. VDP NA with Hutchinson altimeter setting. When local altimeter setting not received, use Hutchinson altimeter setting and increase all DA 43 feet and all MDA 60 feet; increase LPV and LNAV/VNAV Cat A/B visibility 1/8 mile.

MISSED APPROACH: Climb to 3000 direct AKIRE and hold.

AWOS-3 119.625	MINNEAPOLIS APP CON 134.7 284.7	UNICOM 122.8 (CTAF) 0
--------------------------	---	---------------------------------



REIL Rwy 13 and 31 ①
MIRL Rwy 13-31 ①

3000
↑
AKIRE

*LNAV only

WELIK 1.7 NM to RW31

TUPUY 2600

OYITE

4 NM Holding Pattern

124° → 3000
← 304°

GP 3.00°
TCH 40

3300 X 75

304° to RW31

1560*

1 NM 0.7 3.2 NM 6.1 NM

CATEGORY	A	B	C	D
LPV DA	1242-7/8	250 (300-7/8)		NA
LNAV/VNAV DA	1253-7/8	261 (300-7/8)		NA
LNAV MDA	1360-1	368 (400-1)		NA
③ CIRCLING	1420-1 427 (500-1)	1480-1 487 (500-1)		NA

GLENCOE, MINNESOTA

Amdt 1 28MAY15

44°45'N-94°05'W

GLENCOE MUNI (GYL)

RNAV (GPS) RWY 31