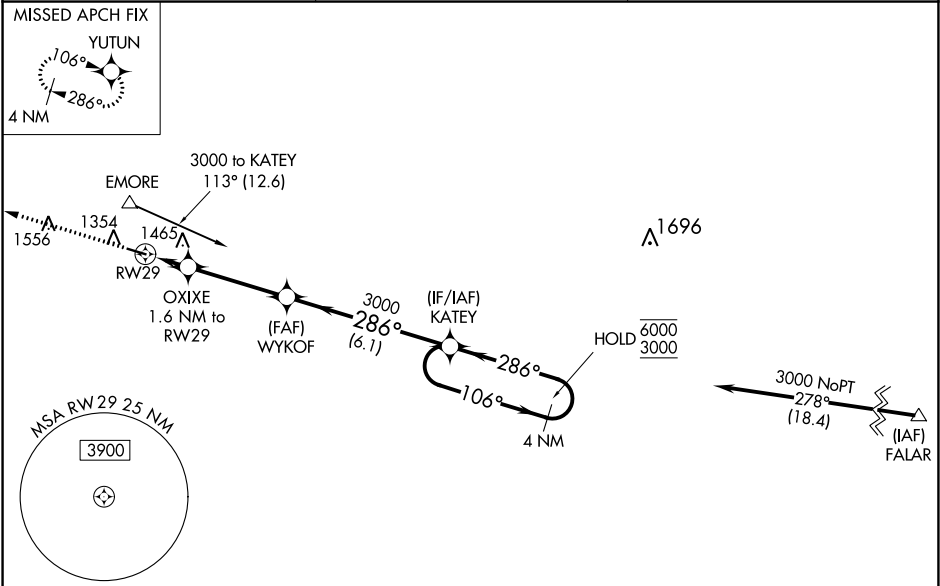


WAAS CH 70529 W29A	APP CRS 286°	Rwy Idg TDZE Apt Elev	4001 1277 1277
--	------------------------	-----------------------------	---

RNAV (GPS) RWY 29
FILLMORE COUNTY (FKA)

RNP APCH.	MISSED APPROACH: Climb to 4000 direct YUTUN and hold
-----------	--

AWOS-3 118.55	ROCHESTER APP CON * 119.8 251.125	CTAF 122.9
-------------------------	---	----------------------



ELEV 1277	TDZE 1277
-----------	-----------

		4000 YUTUN VGSI and descent angles not coincident (VGSI Angle 3.00/TCH 25). WYKOF KATEY 4 NM Holding Pattern			
LNAV only. OXIXE 1.6 NM to RW29 1820		3000	286°	106°	6000 3000 GP 3.00° TCH 40
1.6 NM 3.7 NM 6.1 NM					
CATEGORY	A	B	C	D	
LPV DA	1527-1	250 (300-1)		NA	
LNAV/VNAV DA	1550-1	273 (300-1)		NA	
LNAV MDA	1780-1	503 (600-1)	1780-1 3/8 503 (600-1 3/8)	NA	
CIRCLING	1780-1 503 (600-1)	1900-1 623 (700-1)	1900-1 3/4 623 (700-1 3/4)	NA	

REIL Rwy 11 and 29
MIRL Rwy 11-29

NC-1, 03 DEC 2020 to 31 DEC 2020

NC-1, 03 DEC 2020 to 31 DEC 2020