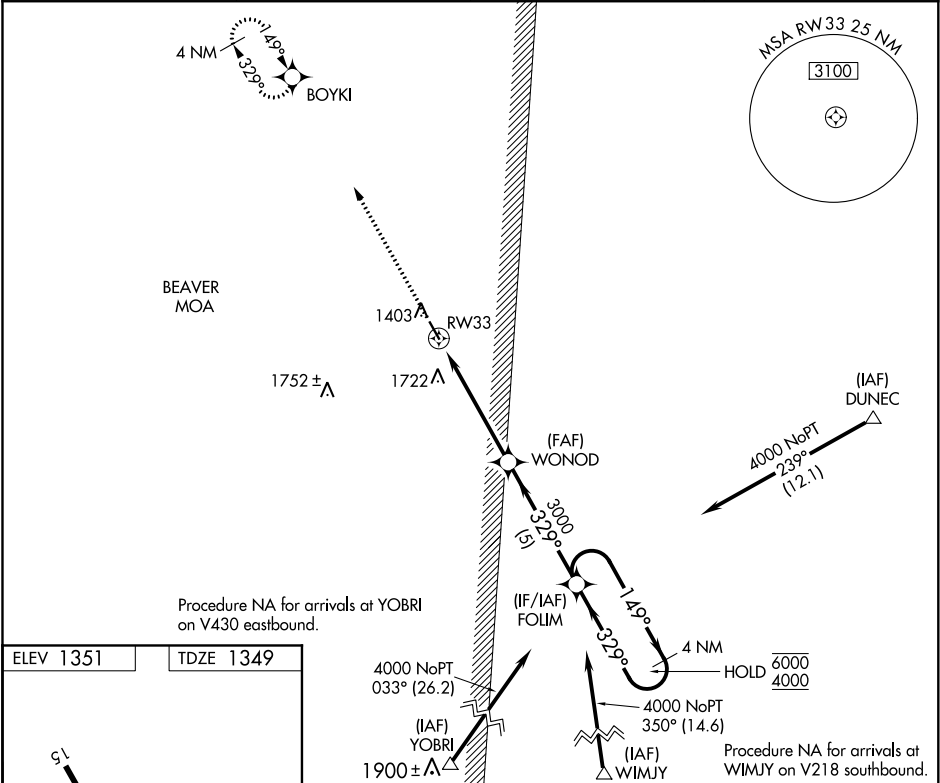


WAAS CH <b>40226</b> <b>W33A</b>	APP CRS <b>329°</b>	Rwy Idg TDZE Apt Elev	<b>3998</b> <b>1349</b> <b>1351</b>
--	------------------------	-----------------------------	---

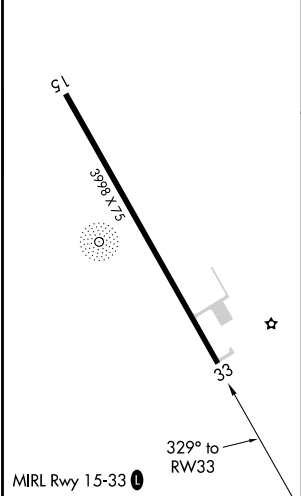
RNAV (GPS) RWY 33  
BIGFORK MUNI (F'0Z)

RNP APCH.	MISSED APPROACH: Climb to 4000 direct BOYKI and hold, continue climb-in-hold to 4000.
Rwy 33 helicopter visibility reduction below 3/4 SM NA.	

AWOS-3 <b>345</b>	MINNEAPOLIS CENTER <b>127.9 281.45</b>	GCO <b>121.725</b>	CTAF <b>122.9 0</b>
----------------------	---	-----------------------	------------------------



ELEV 1351	TDZE 1349
-----------	-----------



4000	BOYKI	WONOD	FOLIM	4 NM Holding Pattern
1.5 NM to RW33	1.5 NM to RW33	3.00° TCH 40	329°	149° → 6000 ← 329° 4000
1.5	3.6 NM	5 NM		
CATEGORY	A	B	C	D
LP MDA	1860-1	511 (600-1)	NA	
LNAV MDA	1860-1	511 (600-1)	NA	
CIRCLING	1860-1	509 (600-1)	NA	

NC-1, 03 DEC 2020 to 31 DEC 2020

NC-1, 03 DEC 2020 to 31 DEC 2020