

WAAS CH 58138 W15A	APP CRS 148°	Rwy Idg 3999 TDZE 1067 Apt Elev 1067
--	------------------------	---

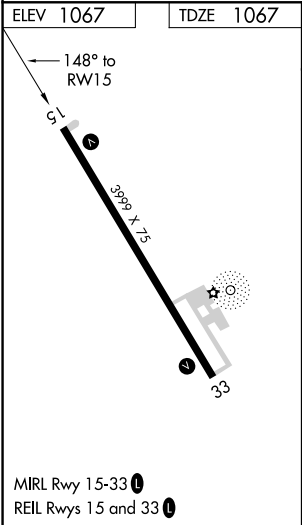
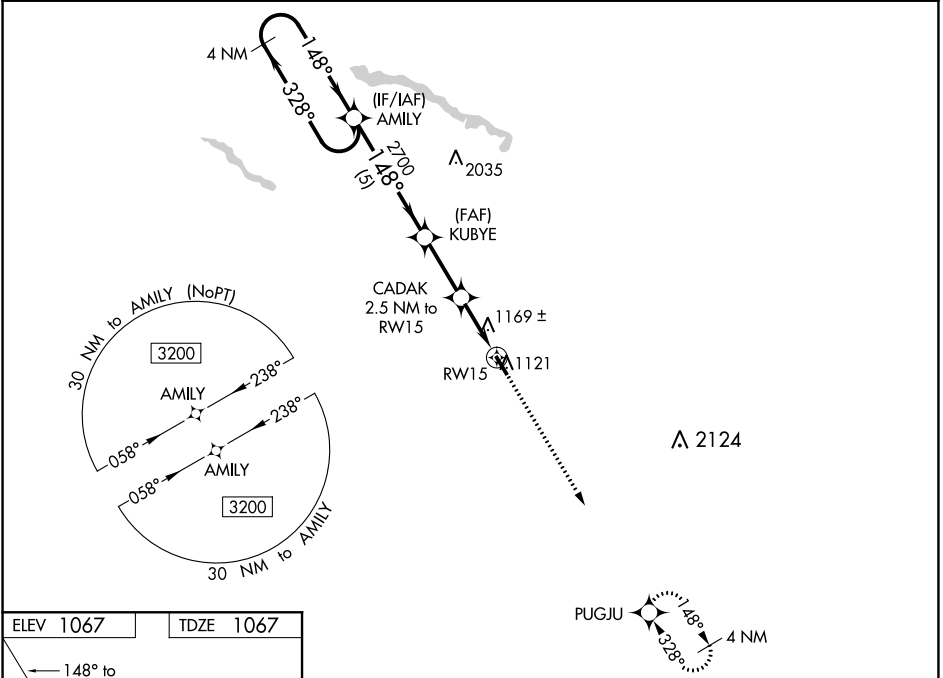
RNAV (GPS) RWY 15


ST JAMES MUNI (JYG)

DME/DME RNP-0.3 NA. For uncompensated Baro-VNAV systems, procedure NA below -17°C (2°F) or above 54°C (130°F). Baro-VNAV and VDP NA when using New Ulm altimeter setting. When local altimeter not received, use New Ulm, MN altimeter setting and increase LPV DA to 1372 feet and LNAV/VNAV DA to 1530 feet, and all MDA 60 feet.

MISSED APPROACH: Climb to 3200 direct PUGJU and hold.

AWOS-3 123.7	MINNEAPOLIS CENTER 127.75 257.7	GCO 121.725	CTAF 122.9 0
------------------------	---	-----------------------	------------------------



<p>4 NM Holding Pattern</p> <p>AMILY</p> <p>← 328°</p> <p>3200</p> <p>148° →</p> <p>GP 3.00° TCH 40</p>				<p>VGSI and descent angles not coincident (VGSI Angle 3.00/TCH 24).</p> <p>KUBYE</p> <p>2700</p> <p>CADAK</p> <p>2.5 NM to RW15</p> <p>*1.1 NM to RW15</p> <p>*1880</p> <p>RW15</p>				<p>3200</p> <p>↑</p> <p>PUGJU</p> <p>✦</p> <p>* LNAV only</p>	
CATEGORY		A	B	C	D				
LPV	DA	1317-1	250 (300-1)	NA					
LNAV/ VNAV	DA	1475-1 ³ / ₈	408 (500-1 ³ / ₈)	NA					
LNAV	MDA	1420-1	353 (400-1)	NA					
 CIRCLING		1500-1 433 (500-1)	1520-1 453 (500-1)	NA					

NC-1, 03 DEC 2020 to 31 DEC 2020

NC-1, 03 DEC 2020 to 31 DEC 2020