

WAAS CH 90521 W24A	APP CRS 241°	Rwy Idg TDZE Apt Elev	4400 1073 1073
--	------------------------	-----------------------------	---

RNAV (GPS) RWY 24

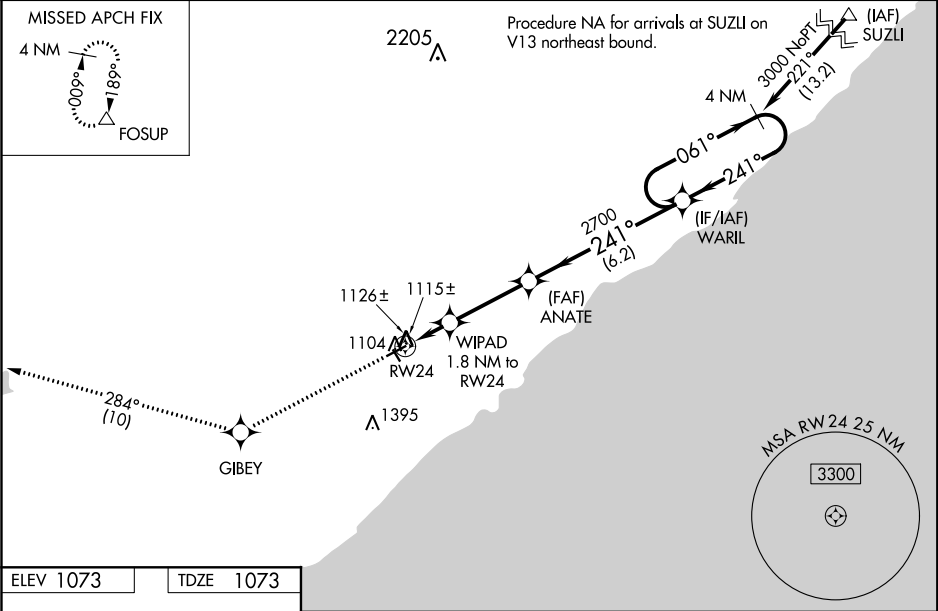
RICHARD B HELGESON (TWM)

RNP APCH.

Baro-VNAV NA when using Silver Bay Muni altimeter setting. For uncompensated Baro-VNAV systems, LNAV/VNAV NA below -17°C or above 54°C. When local altimeter setting not received, use Silver Bay Muni altimeter setting and increase all DA 44 feet and all MDA 60 feet. Increase LPV and LNAV/VNAV Cats A/B visibility ½ mile. Rwy 24 helicopter visibility reduction below ¾ SM NA. VDP NA with Silver Bay Muni altimeter setting. Circling to Rwy 15, 33 NA.

MISSED APPROACH: Climb to 3600 direct GIBEY and on track 284° to FOSUP and hold.

AWOS-3 119.325	DULUTH APP CON 125.45 233.7	GCO 121.725	CTAF 122.9 0
--------------------------	---------------------------------------	-----------------------	------------------------



ELEV 1073

TDZE 1073

3600

GIBEY

↑

tr 284°

FOSUP

△

VGSI and RNAV glidepath not coincident (VGSI Angle 3.00/TCH 27).

4 NM Holding Pattern

WARIL

061°

241°

3000

GP 3.00° TCH 40

*LNAV only

WIPAD 1.8 NM to RW24

*0.9 NM to RW24

ANATE

2700

1680*

0.9 NM

0.9 NM

3.2 NM

6.2 NM

241° to RW24

4400 X 75

2881 X 150

1.32 UP

15

MIRL Rwy 6-24 0

REIL Rwy 6 and 24 0

CATEGORY	A	B	C	D
LPV DA	1323-7/8 250 (300-7/8)			NA
LNAV/VNAV DA	1323-7/8 250 (300-7/8)			NA
LNAV MDA	1380-1 307 (400-1)			NA
CIRCLING	1600-1 527 (600-1)	1680-1 607 (700-1)		NA