

WAAS CH 65918 W31A	APP CRS 307°	Rwy Idg TDZE Apt Elev	4202 1394 1402
--	------------------------	-----------------------------	---

RNAV (GPS) RWY 31

BARNES COUNTY MUNI (BAC)

RNP APCH.

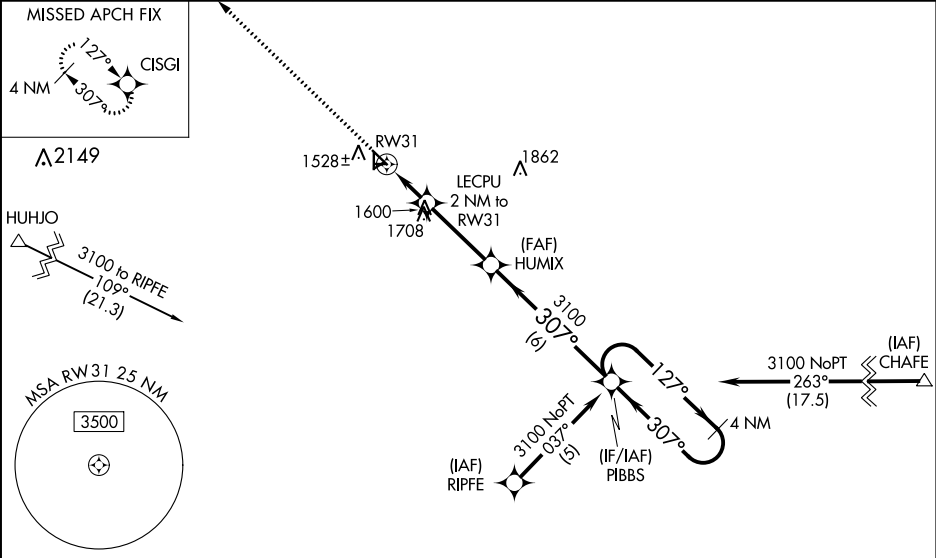
▼

▲

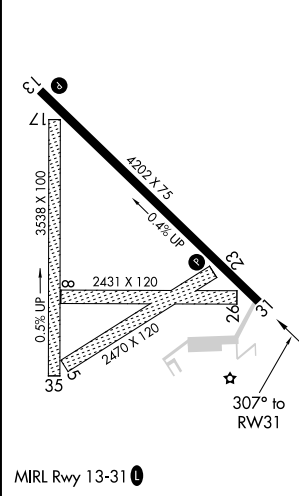
Baro-VNAV NA when using Jamestown altimeter setting. For uncompensated Baro-VNAV systems, LNAV/VNAV NA below -17°C or above 54°C. When local altimeter setting not received, use Jamestown altimeter setting and increase LPV DA 77 feet and LNAV/VNAV DA 227 feet, and all MDA 80 feet; increase LPV all Cats visibility ¼ mile, LNAV/VNAV all Cats visibility ¾ mile and increase Circling Cat C visibility ½ mile. Circling NA to Rwy's 5, 8, 17, 23, 26, and 35. Rwy 31 helicopter visibility reduction below ¾ SM NA.

MISSED APPROACH: Climb to 3000 direct CISING and hold.

AWOS-3 118.725	MINNEAPOLIS CENTER 124.2 270.3	UNICOM 122.8 (CTAF)
--------------------------	--	-------------------------------



ELEV 1402	TDZE 1394
------------------	------------------



3000 CISING VGSI and RNAV glidepath not coincident (VGSI Angle 3.00/TCH 28).				
CATEGORY	A	B	C	D
LPV DA	1644-1	250 (300-1)		NA
LNAV/VNAV DA	1717-1¼	323 (400-1¼)		NA
LNAV MDA	1900-1	506 (500-1)	1900-1½ 506 (500-1½)	NA
CIRCLING	1920-1 518 (600-1)	2000-1 598 (600-1)	2000-1½ 598 (600-1½)	NA