

WAAS CH <b>70339</b> <b>W34A</b>	APP CRS <b>340°</b>	Rwy Idg TDZE <b>1107</b> Apt Elev <b>1107</b>	<b>3400</b>
--	------------------------	---	-------------

RNAV (GPS) RWY 34

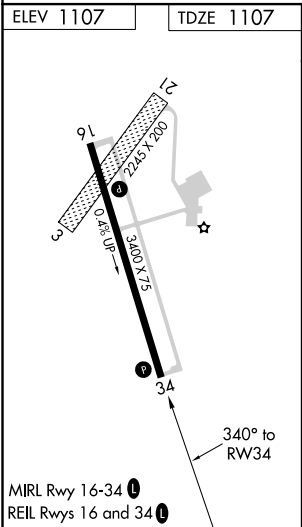
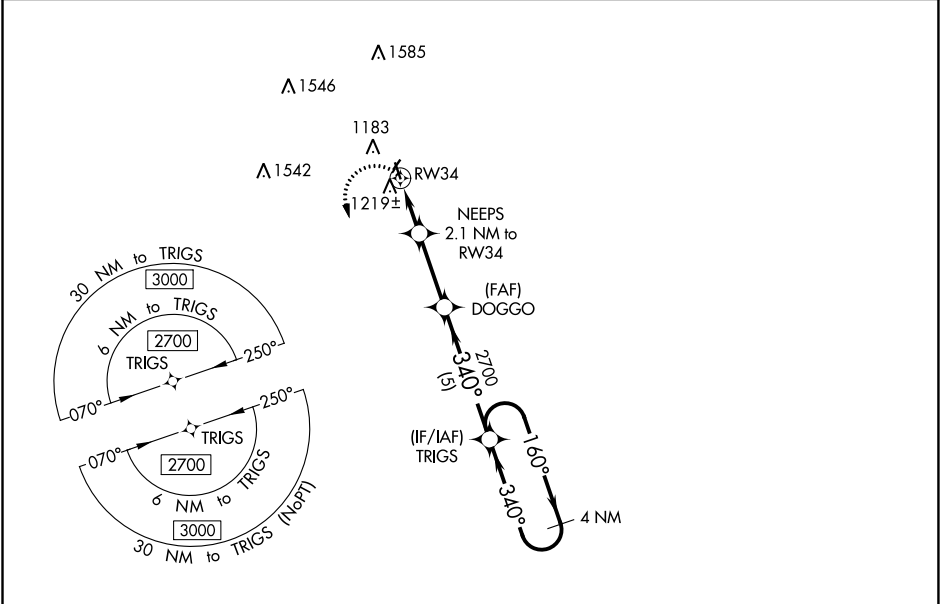
BLUE EARTH MUNI (SBU)

NA

Baro-VNAV NA. Use Fairmont altimeter setting; when not received, use Forest City altimeter setting and increase all DA 45 feet and all MDA 60 feet; increase LPV all Cats visibility 1/8 mile, LNAV/VNAV all Cats, LNAV Cat C and Circling Cat C visibility 1/4 mile. DME/DME RNP-0.3 NA. Helicopter visibility reduction below 1 SM NA. Circling NA to Rwy's 3 and 21.

MISSED APPROACH: Climbing left turn to 2700 direct TRIGS and hold.

FRM AWOS-3PT <b>120.025</b>	MINNEAPOLIS CENTER <b>127.75 257.7</b>	GCO <b>121.725</b>	UNICOM <b>122.8 (CTAF) 0</b>
--------------------------------	---	-----------------------	---------------------------------



1771

2700 TRIGS

\*LNAV only

NEEPS 2.1 NM to RW34

DOGGO 2700

TRIGS

4 NM Holding Pattern

160° 2700

340° 2700

GP 3.00° TCH 35

1800\*

2.1 NM 2.8 NM 5 NM

CATEGORY	A	B	C	D
LPV DA	1398-1 291 (300-1)			NA
LNAV/VNAV DA	1548-1½ 441 (500-1½)			NA
LNAV MDA	1520-1	413 (500-1)	1520-1½ 413 (500-1½)	NA
CIRCLING	1560-1	453 (500-1)	1720-1¾ 613 (700-1¾)	NA