

WAAS CH 56526 W09A	APP CRS 091°	Rwy Idg 5010 TDZE 778 Apt Elev 778
--	------------------------	---

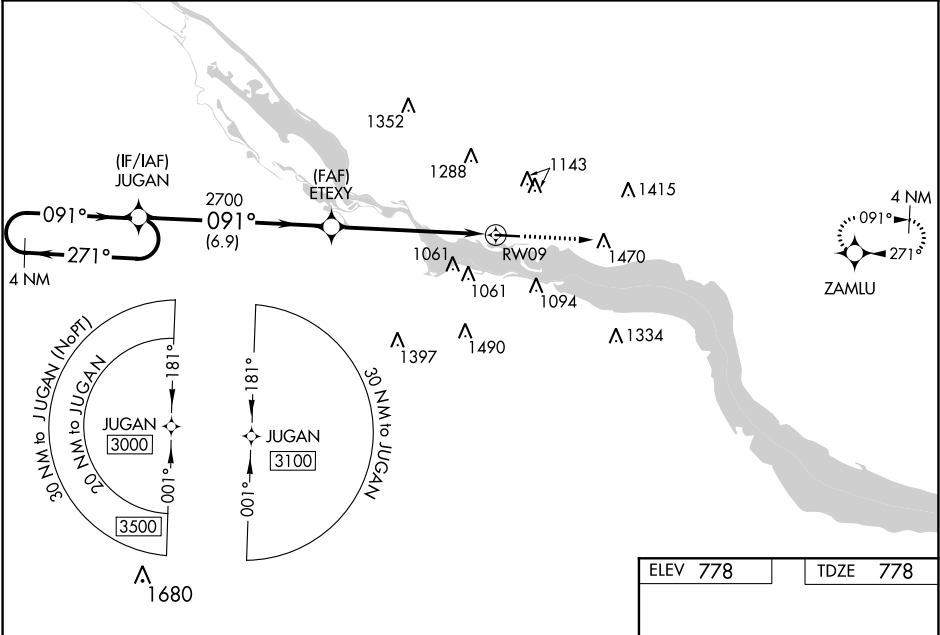
RNAV (GPS) RWY 9
RED WING RGNL (RGK)

⚠ Baro-VNAV NA when using South St. Paul altimeter setting. For uncompensated Baro-VNAV systems, LNAV/VNAV NA below -16°C (4°F) or above 38°C (100°F). DME/DME RNP-0.3 NA. VDP NA with South St. Paul altimeter setting. When local altimeter setting not received, use South St. Paul altimeter setting and increase all DA 72 feet and all MDA 80 feet; increase LNAV/VNAV visibility $\frac{3}{8}$ mile all Cats, LNAV and Circling Cat B/C/D visibility $\frac{1}{4}$ mile. For inop MALSR, increase LNAV Cat C/D visibility $\frac{3}{8}$ mile. For inop MALSR when using South St. Paul altimeter setting, increase LPV visibility $\frac{3}{8}$ mile all Cats, LNAV/VNAV all Cats and LNAV Cat C/D visibility $\frac{3}{4}$ mile.

MALSR

MISSED APPROACH:
Climb to 3000 direct ZAMLU and hold.

AWOS-3 119.25	MINNEAPOLIS APP CON 121.2 335.65	UNICOM 123.05 (CTAF) 0
-------------------------	--	---



4 NM Holding Pattern JUGAN

ETEXY 2700

*1.4 NM to RW09

RW09

*LNAV only

CATEGORY	A	B	C	D
LPV DA	978- $\frac{1}{2}$		200 (200- $\frac{1}{2}$)	
LNAV/VNAV DA	1160- $\frac{3}{4}$		382 (400- $\frac{3}{4}$)	
LNAV MDA	1260- $\frac{1}{2}$ 482 (500- $\frac{1}{2}$)		1260-1 482 (500-1)	
CIRCLING	1480-1 702 (800-1)	1520-1 742 (800-1)	1540-2 $\frac{1}{4}$ 762 (800-2 $\frac{1}{4}$)	1540-2 $\frac{1}{2}$ 762 (800-2 $\frac{1}{2}$)

ELEV 778

TDZE 778

091° to RW09

HIRL Rwy 9-27 **0**

NC-1, 03 DEC 2020 to 31 DEC 2020

NC-1, 03 DEC 2020 to 31 DEC 2020