

|  |                        |   |
|--|------------------------|---|
| WAAS<br>CH <b>77930</b><br><b>W33A</b> | APP CRS<br><b>331°</b> | Rwy Idg <b>5100</b><br>TDZE <b>968</b><br>Apt Elev <b>968</b> |
|--|------------------------|---|

RNAV (GPS) RWY 33

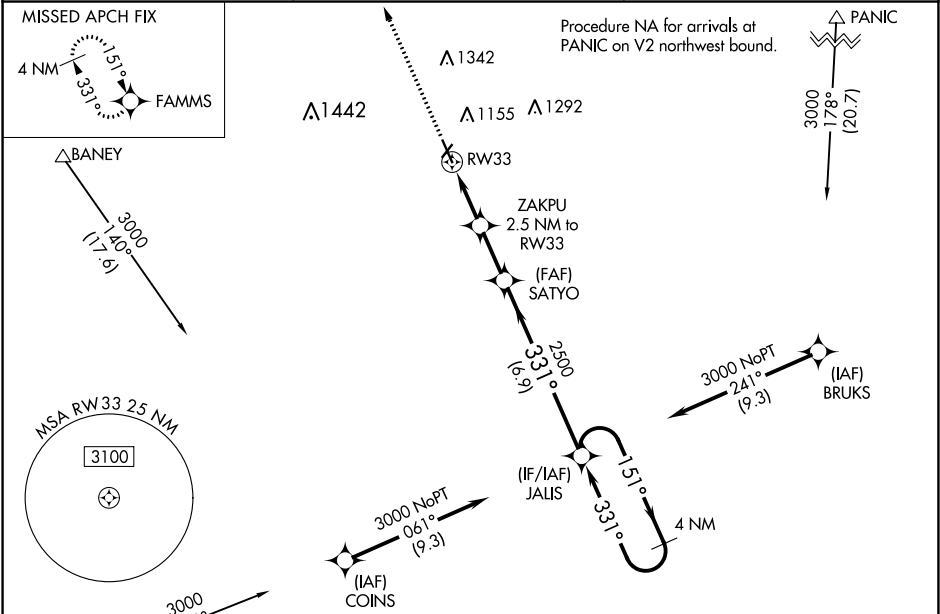
HARRY STERN (BWP)

**⚠** When VGSI inop, Circling Rwy 15 NA at night. For uncompensated Baro-VNAV systems, LNAV/VNAV NA below -16°C (4°F) or above 54°C (130°F). DME/DME RNP-0.3 NA.

**⚠** Visibility reduction by helicopters NA. When local altimeter setting not received, use Fergus Falls altimeter setting and increase all DA/MDA 80 feet and all visibility ⅓ mile. Baro-VNAV and VDP NA when using Fergus Falls altimeter setting.

MISSED APPROACH: Climb to 3000 direct FAMMS and hold.

|                          |   |                                 |
|--------------------------|---|---------------------------------|
| AWOS-3<br><b>127.875</b> | MINNEAPOLIS CENTER<br><b>127.35 278.3</b> | UNICOM<br><b>123.0 (CTAF) 0</b> |
|--------------------------|---|---------------------------------|



|              |        |             |  |              |                 |             |                      |      |
|--------------|--------|-------------|--|--------------|-----------------|-------------|----------------------|------|
| 3000         |        | FAMMS       | VGSI and RNAV glidepath not coincident (VGSI Angle 3.00/TCH 26). |              | JALUS           |             | 4 NM Holding Pattern |      |
| *LNAV only   |        |             | ZAKPU 2.5 NM to RW33   | SATYO 2500   | JALUS           |             |                      |      |
| RW33         |        |             | *1.1 NM to RW33  | 1800*        | 2500            |             | 151°                 | 3000 |
| 1.1 NM       |        | 1.4 NM      | 2.1 NM   | 6.9 NM       |                 |             | 331°                 | 331° |
| CATEGORY     | A      | B           | C  | D            | GP 3.00° TCH 55 |             |                      |      |
| LPV DA       | 1218-¾ |             | 250 (300-¾)  |              |                 |             |                      |      |
| LNAV/VNAV DA | 1252-⅞ |             | 284 (300-⅞)  |              |                 |             |                      |      |
| LNAV MDA     | 1340-1 |             | 372 (400-1)  |              |                 |             |                      |      |
| CIRCLING     | 1520-1 | 552 (600-1) | 1520-1½  | 552 (600-1½) | 1560-2          | 592 (600-2) |                      |      |

