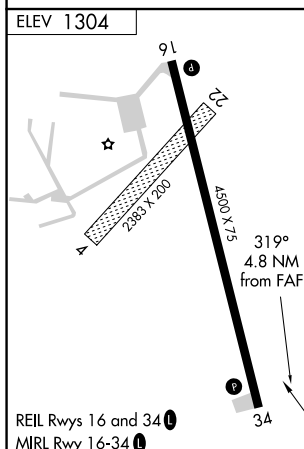
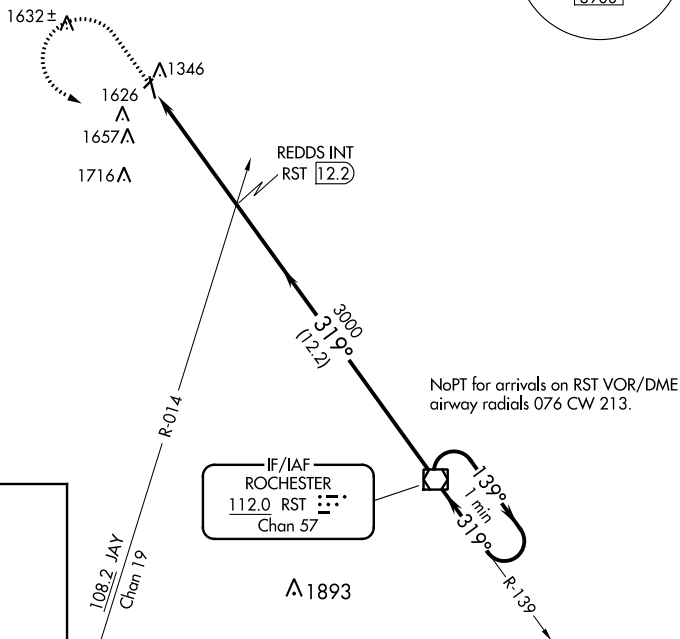
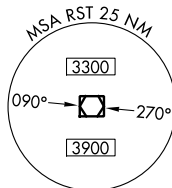


20310

VOR-A
DODGE CENTER (TOB)

MISSED APPROACH: Climb to 2500 then climbing left turn to 3000 via RST VOR/DME R-319 to RST VOR/DME and hold.

CTAF
122.9 L[illegible]

DODGE CENTER (TOB)
VOR-A

44°01'N-92°50'W