

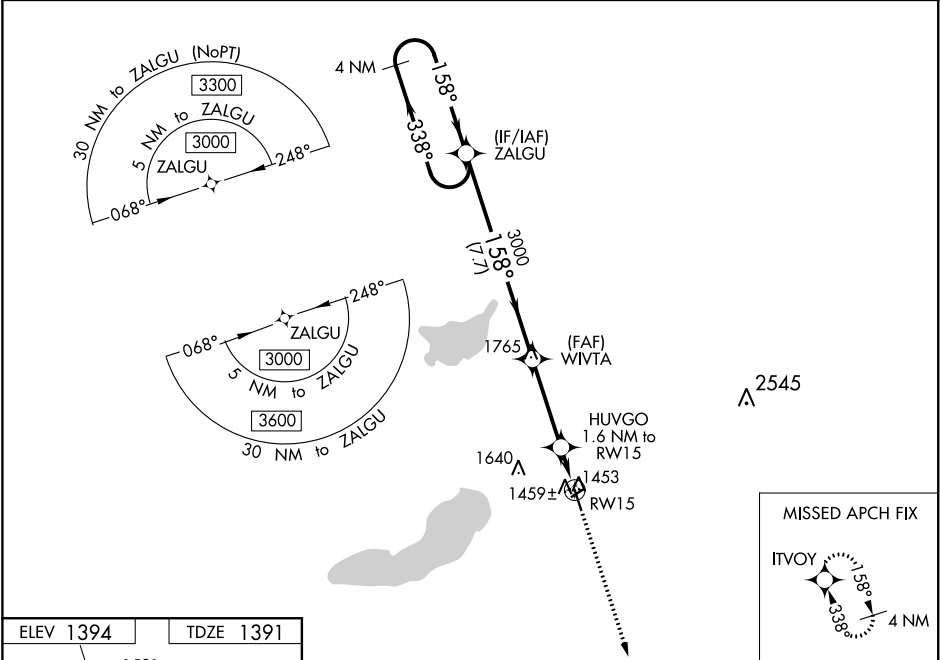
WAAS CH <b>70333</b> <b>W15A</b>	APP CRS <b>158°</b>	Rwy Idg TDZE Apt Elev	<b>4500</b> <b>1391</b> <b>1394</b>
--	------------------------	-----------------------------	---

**RNAV (GPS) RWY 15**  
GLENWOOD MUNI (GHW)

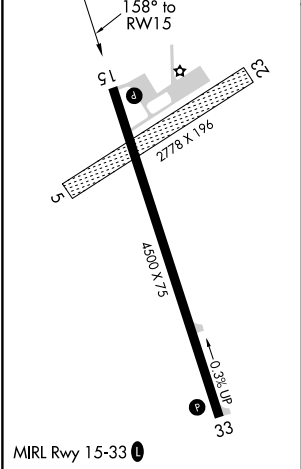
**⚠** For uncompensated Baro-VNAV systems, LNAV/VNAV NA below -17°C (-2°F) or above 54°C (130°F). DME/DME RNP-0.3 NA. Helicopter visibility reduction below 1 SM NA. When local altimeter setting not received, use Alexandria altimeter setting and increase DA 36 feet and all MDA 40 feet. Baro-VNAV and VDP NA when using Alexandria altimeter setting. Circling NA to Rwy's 5/23.

**MISSED APPROACH:**  
Climb to 3000 direct ITVOY and hold.

AWOS-3 <b>118.925</b>	MINNEAPOLIS CENTER <b>126.1 269.2</b>	GCO <b>121.725</b>	CTAF <b>122.9 0</b>
--------------------------	--	-----------------------	------------------------



ELEV <b>1394</b>	TDZE <b>1391</b>
------------------	------------------



4 NM Holding Pattern		VGSI and RNAV glidepath not coincident (VGSI Angle 3.00/TCH 33).		3000 ↑	ITVOY ✦
ZALGU		WIVTA		* LNAV only	
3000 ← 338°		3000		HUVGO 1.6 NM to RW15	
158° →		158°		* 0.9 NM to RW15	
GP 3.00° TCH 45		3000		* 1940	
		7.7 NM		0.7 NM	
		3.3 NM		0.9 NM	
CATEGORY	A	B	C	D	
LPV DA	1641-1	250 (300-1)		NA	
LNAV/ VNAV DA	1641-1	250 (300-1)		NA	
LNAV MDA	1720-1	329 (400-1)		NA	
CIRCLING	1840-1 446 (500-1)	1860-1 466 (500-1)	1860-1½ 466 (500-1½)	NA	

NC-1, 03 DEC 2020 to 31 DEC 2020

NC-1, 03 DEC 2020 to 31 DEC 2020