
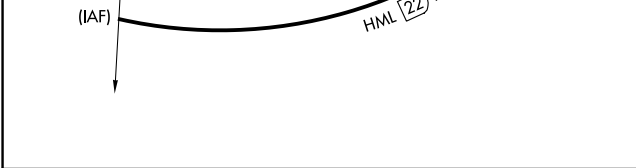
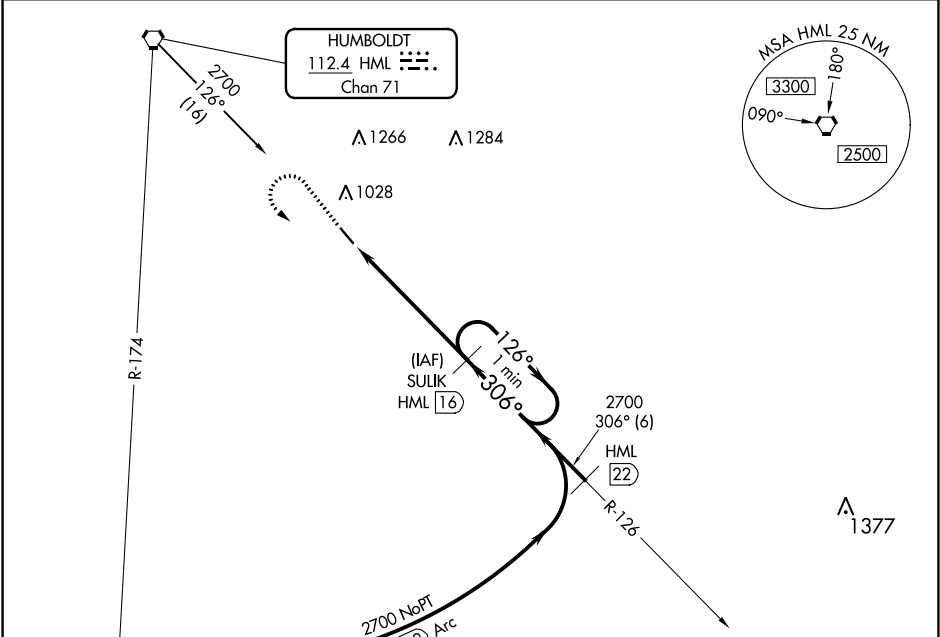


VORTAC HML	APP CRS	Rwy Idg	4007
112.4	306°	TDZE	819
Chan 71		Apt Elev	819

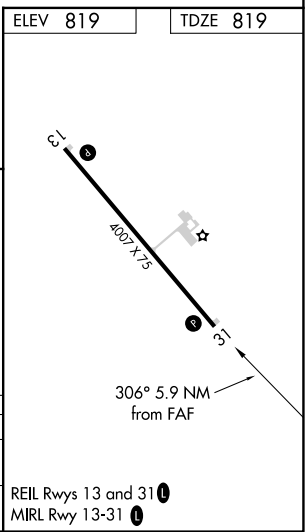
VOR/DME RWY 31
HALLOCK MUNI (HCO)

 NA	MISSED APPROACH: Climb to 2000 then climbing left turn to 2700 via HML R-126 to SULIK and hold.
--	---

AWOS-3 126.475	MINNEAPOLIS CENTER 132.15 269.6	UNICOM 122.8 (CTAF) 
-------------------	------------------------------------	--



CATEGORY	A	B	C	D
S-31	1220-1 401 (500-1)		1220-1¼ 401 (500-1¼)	
CIRCLING	1380-1 561 (600-1)		1380-1½ 561 (600-1½)	1380-2 561 (600-2)



NC-1, 03 DEC 2020 to 31 DEC 2020

NC-1, 03 DEC 2020 to 31 DEC 2020