

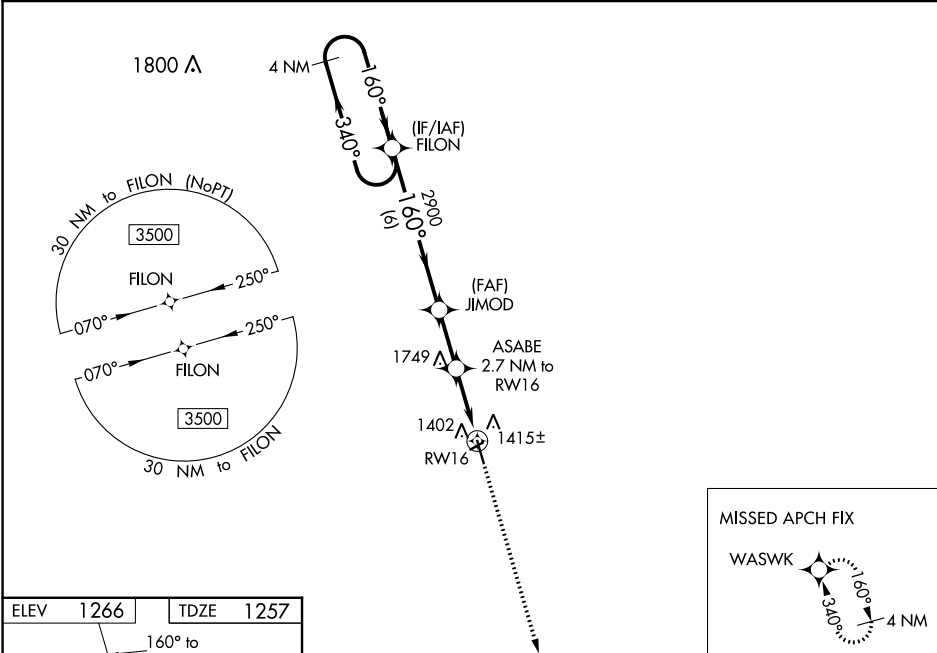
WAAS CH 93936 W16A	APP CRS 160°	Rwy Idg TDZE 1257 Apt Elev 1266
--	------------------------	---

RNAV (GPS) RWY 16
GWINNER-ROGER MELROE FIELD (GWR)

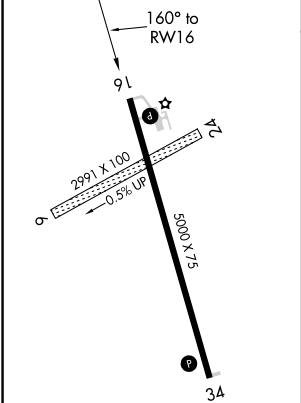
⚠ For uncompensated Baro-VNAV systems, LNAV/VNAV NA below -17°C (2°F) or above 47°C (117°F). DME/DME RNP-0.3 NA. Circling NA to Rwy 6 and 24. Baro-VNAV and VDP NA when using Fargo altimeter setting. When local altimeter setting not received, use Fargo altimeter setting: increase LPV DA to 1683 feet and visibility ¾ SM, and LNAV/VNAV DA to 1803 feet and visibility ¾ SM; increase all MDAs 180 feet and visibility LNAV Cat C/D ¾ SM, and Circling Cat C ¾ SM, and Circling Cat D ½ SM.

MISSED APPROACH:
Climb to 3500 direct WASWK and hold.

AWOS-3 118.325	MINNEAPOLIS CENTER 127.35 278.3	UNICOM 122.7 (CTAF) 0
--------------------------	---	---------------------------------



ELEV 1266	TDZE 1257
-----------	-----------



MIRL Rwy 16-34
REIL Rwy 16 and 34

GWINNER, NORTH DAKOTA
Amdt 4A 09NOV17

4 NM Holding Pattern				VGSI and RNAV glidepath not coincident (VGSI Angle 3.00/TCH 25).				3500	WASWK
3500				JIMOD				ASABE	
GP 3.10°				2900				2.7 NM to RW16	
TCH 40				2900				*1.2 NM to RW16	
				*2180				RW16	
				6 NM				1.5 NM	1.2 NM
CATEGORY	A	B	C	D					
LPV DA	1507-1				250 (300-1)				
LNAV/VNAV DA	1627-1¼				370 (400-1¼)				
LNAV MDA	1660-1				403 (400-1)				1660-1½ 403 (400-1½)
CIRCLING	1780-1				514 (600-1)				1840-1½ 2060-2½ 574 (600-1½) 794 (800-2½)

GWINNER-ROGER MELROE FIELD (GWR)
RNAV (GPS) RWY 16