

WAA CH 70532 W15A	APP CRS 152°	Rwy Idg TDZE 1127 Apt Elev 1127	3399
---------------------------------------	------------------------	---	-------------

RNAV (GPS) RWY 15

WASECA MUNI (ACQ)

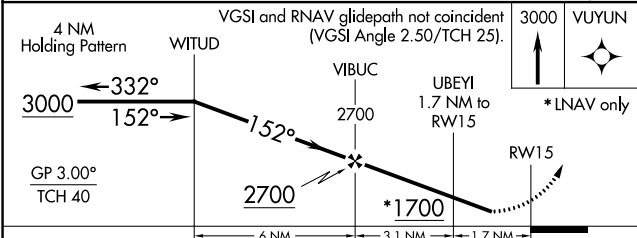
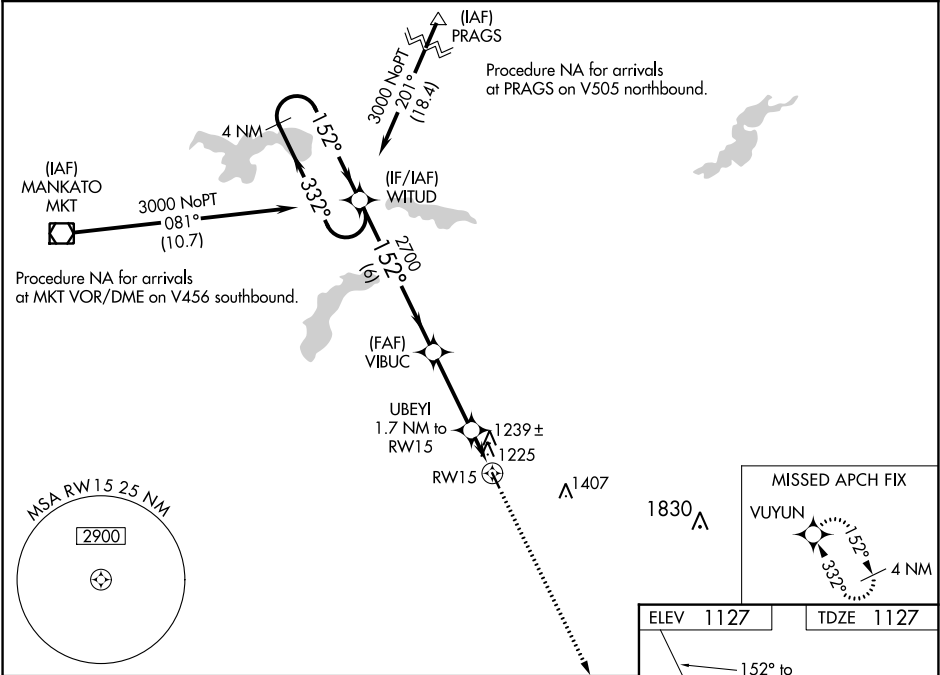
▼

⚠

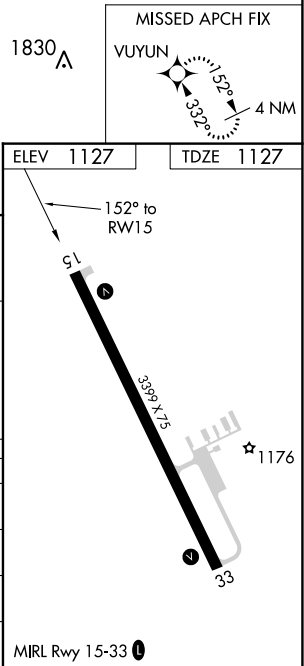
Baro-VNAV NA when using Owatonna altimeter setting. For uncompensated Baro-VNAV systems, LNAV/VNAV NA below -17°C (2°F) or above 54°C (130°F). Procedure NA at night. DME/DME RNP-0.3 NA. When local altimeter setting not received, use Owatonna altimeter setting and increase all DA 34 feet and all MDA 40 feet; increase LNAV and Circling Cat C visibility ¼ mile. Helicopter visibility reduction below 1 SM NA.

MISSED APPROACH:
Climb to 3000 direct VUYUN and hold.

AWOS-3 118.425	MINNEAPOLIS CENTER 135.0 306.9	UNICOM 122.8 (CTAF) 0
--------------------------	--	---------------------------------



CATEGORY	A	B	C	D
LPV DA	1377-1	250 (300-1)		NA
LNAV/VNAV DA	1389-1	262 (300-1)	1389-1½ 262 (300-1½)	NA
LNAV MDA	1540-1	413 (500-1)	1540-1½ 413 (500-1½)	NA
CIRCLING	1560-1 433 (500-1)	1620-1 493 (500-1)	1760-1¾ 633 (700-1¾)	NA



NC-1, 03 DEC 2020 to 31 DEC 2020

NC-1, 03 DEC 2020 to 31 DEC 2020