

LOC I-BPM	APP CRS	Rwy Idg	7500
111.9	133°	TDZE	1031
		Apt Elev	1031

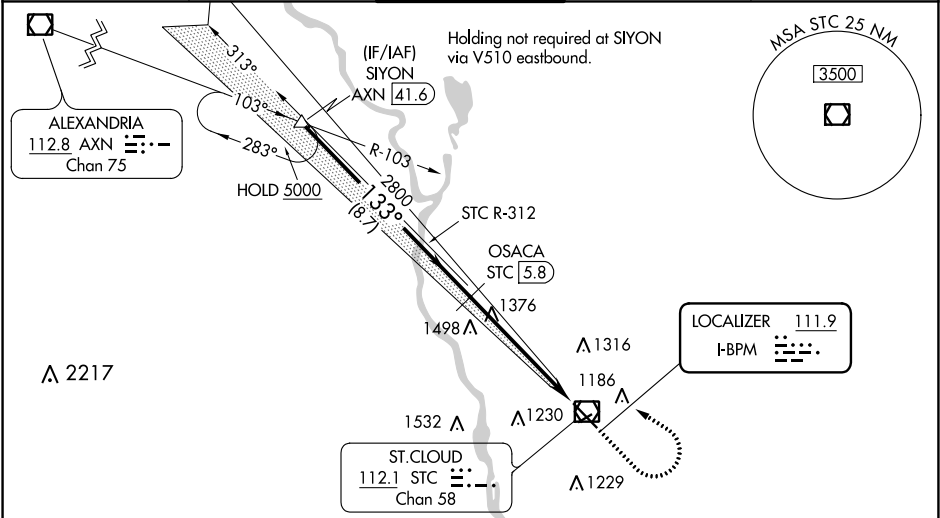
ILS or LOC/DME RWY 13
ST CLOUD RGNL (STC)

⚠ Circling to Rwy 5-23 NA at night. DME from STC VOR/DME. Simultaneous reception of I-BPM and STC DME required. DME required. When local altimeter setting not received, use Little Falls altimeter setting and increase DA to 1307 and all MDAs 80 feet. Increase S-LOC 13 Cats C/D and Circling Cats C/D visibility 1/4 mile. For inoperative MALSRL when using Little Falls altimeter setting, increase S-ILS 13 all Cats visibility 1/2 mile.

MALSRL
A5

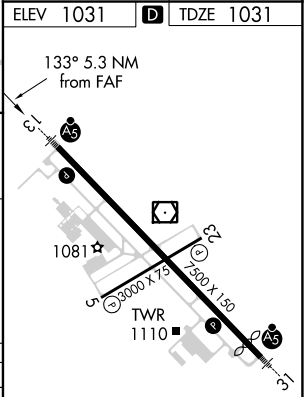
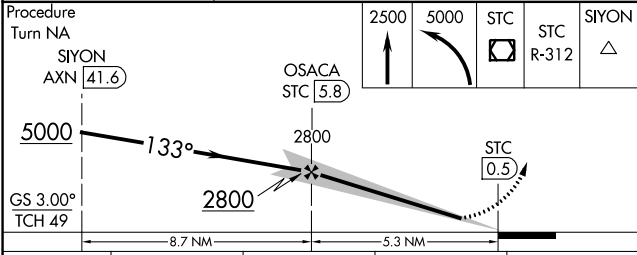
MISSED APPROACH: Climb to 2500 then climbing left turn to 5000 direct STC VOR/DME and via STC VOR/DME R-312 to SIYON/AXN VOR/DME 41.6 DME and hold.

ATIS 119.375	MINNEAPOLIS CENTER 121.05 397.9	ST. CLOUD TOWER ★ 118.25 (CTAF) 0	GND CON 123.75	UNICOM 123.5
-----------------	------------------------------------	--------------------------------------	-------------------	-----------------



ALTERNATE MISSED APCH FIX

097°
277°
DARWIN DWN 109.0 Chan 27
R-097



CATEGORY	A	B	C	D
S-ILS 13	1231-1/2 200 (200-1/2)			
S-LOC 13	1680-1/2 649 (700-1/2)	1680-1 649 (700-1 1/4)	1680-1 1/2 649 (700-1 1/2)	
CIRCLING	1680-1 649 (700-1)	1680-1 3/4 649 (700-1 3/4)	1680-2 649 (700-2)	

MIRL Rwy 5-23 0

HIRL Rwy 13-31 0

NC-1, 03 DEC 2020 to 31 DEC 2020

NC-1, 03 DEC 2020 to 31 DEC 2020